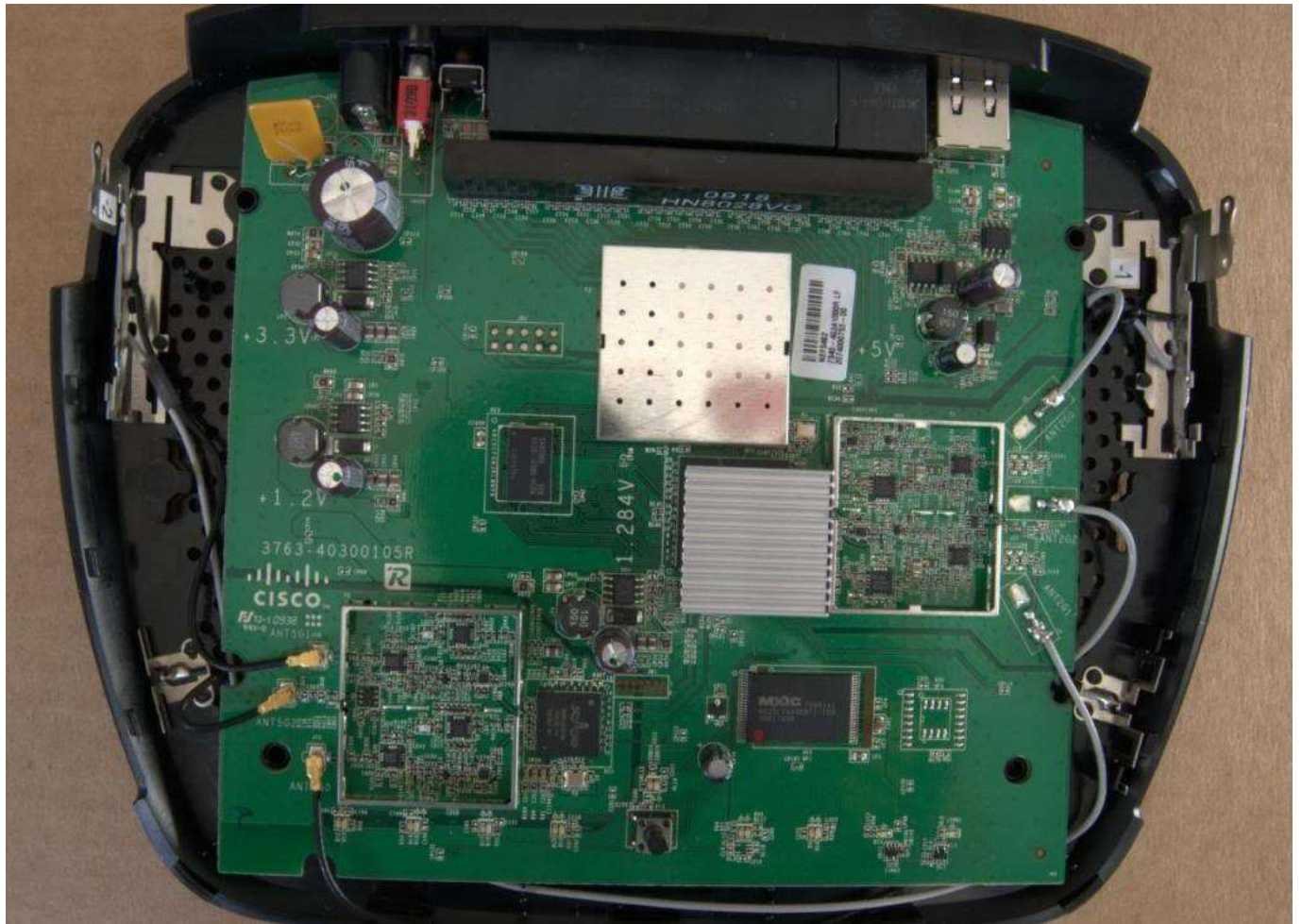


Thank you for purchasing the 6dBi Antenna Mod Kit for your Linksys router. First we will show you how to install the antennas for your router. Next we will provide you with a tool that will help test the performance of your newly modified router.

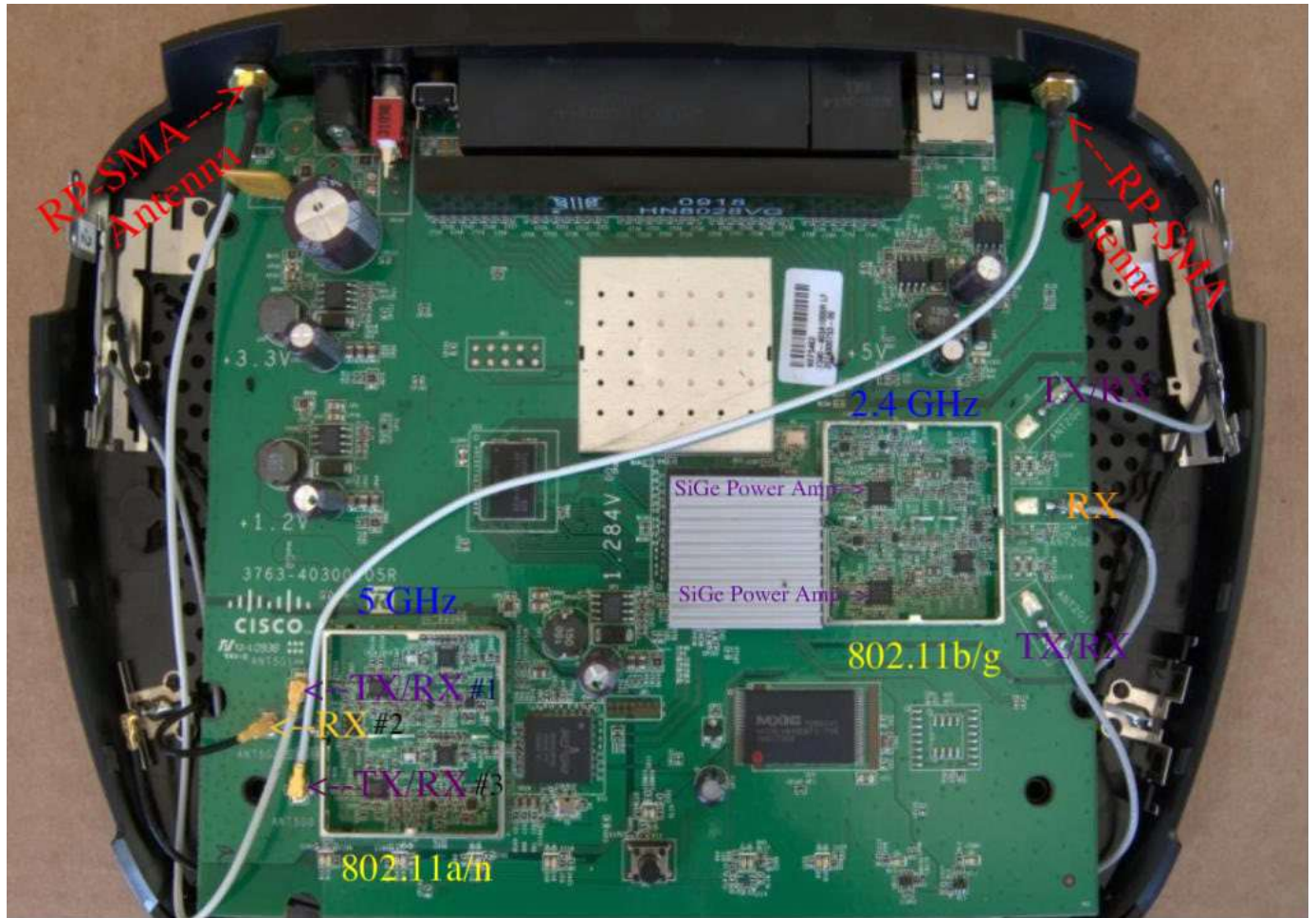


WRT610N V2 Antenna Installation Instructions:

1. No soldering required
2. Open the unit. You can use a torque wrench (size T10) or the sharp end of a kitchen knife will work (we don't recommend this).
3. Remove the UFL antenna connectors.



4. Now this part requires some patience.
5. Fitting your new UFL connectors into the little holes can take a little practice, and patience
6. So do this first: Practice removing the original UFL antenna cables and then putting them back on.
7. You will be attaching UFL cables to PURPLE Antenna TX/RX 1 and 3 (see images below for reference)



8. Now you are ready to drill.

9. Detach the 3 stock UFL cables and get the board out the way of the drilling spots (You won't be able to remove the board from the case as some cables will be still connected, be careful when you do this).

10. Mark on the unit with a pen or whatever you want to use, where you want to drill (see image below where the antenna is mounted). Make sure you don't damage the main board by hitting it with a drill!



11. **Your mark should be just a fraction above center point so the RP-SMA adapter will clear the board. <<Very important IF YOU DRILL TOO LOW THE BOARD WON'T CLEAR**

12. Drill a smaller hole first with a smaller bit and then go ahead and finish the drilling with the 1/4" drill bit.

13. You may want to get someone to help you hold the unit in place as you drill. Hold the unit vertically on a solid surface before drilling. Take your time. No hurry!

14. After drilling there will be a little plastic left around the inside hole that will need removing. Just use a kitchen knife or other small knife to remove the plastic.

15. Attach the UFL cables and the RP-SMA Plugs and of course the 6dBi Antennas and you are set to go. Do not remove any built in antennas.

Be sure the nut on the RP-SMA plug is nice and tight, otherwise your antennas will flop.

NOTE: When putting the case back together make sure none of the cables get pinched with screws.

You

can secure them in place by using clear tape.

Enjoy

