

Thank you for purchasing the 7dBi Antenna Mod Kit for your Belkin router. We will show you how to install the antennas for your router. We will also provide you with a tool that will help test the performance of your newly modified router.



Belkin F7D8301

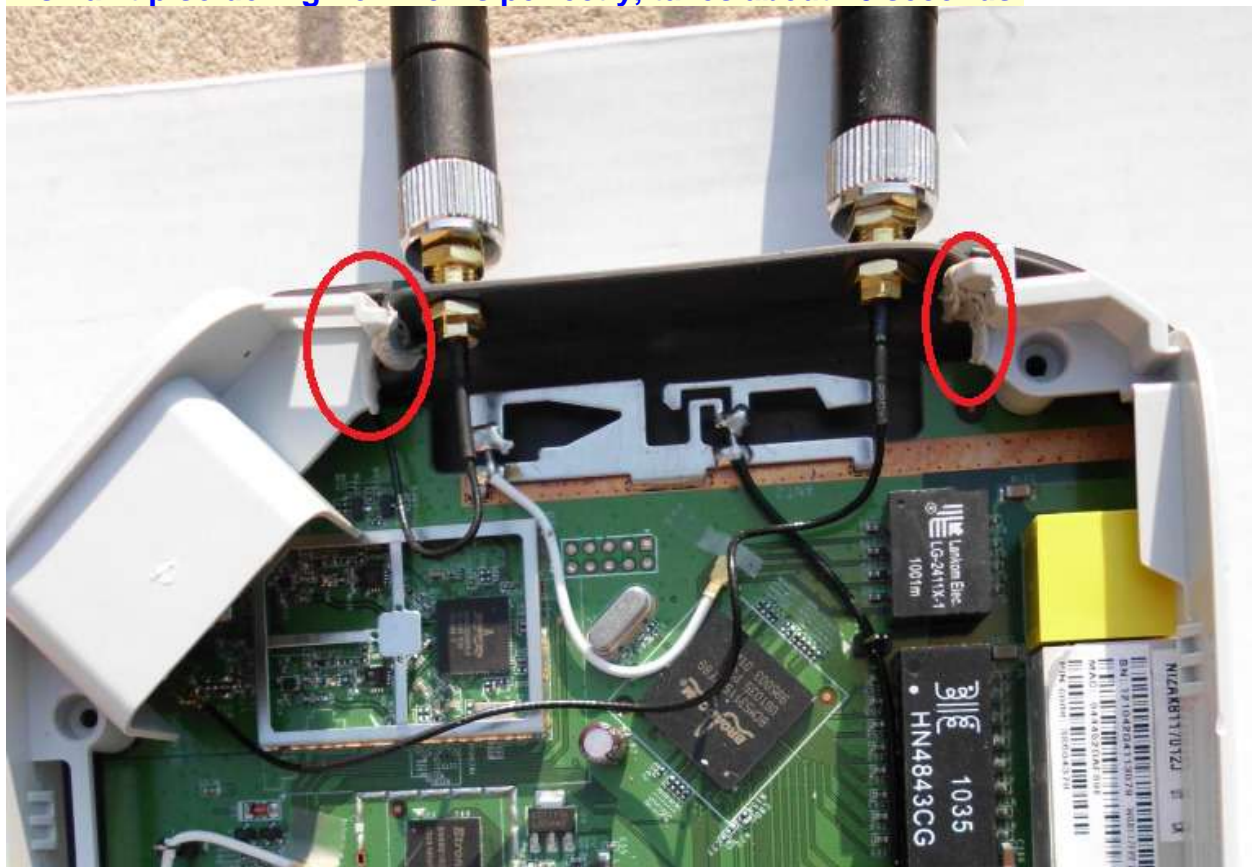
Antenna Installation Instructions:

1. No soldering required
2. Open the unit

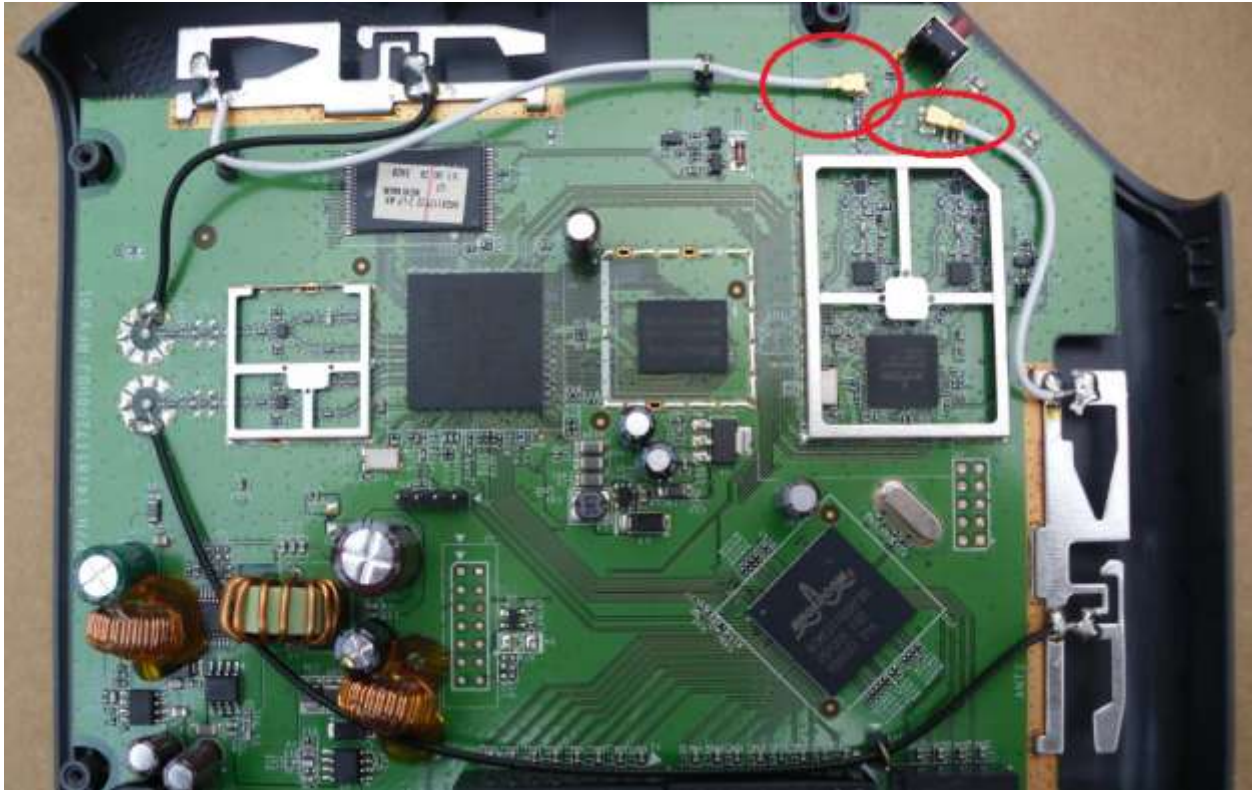
The middle of the internal plastic housing at the top needs to be removed in order to fit the antennas.

Look closely and you can see where we have removed the plastic between the antennas.

A small tip soldering iron works perfectly; takes about 10 seconds.



3. Remove the UFL antenna connectors.

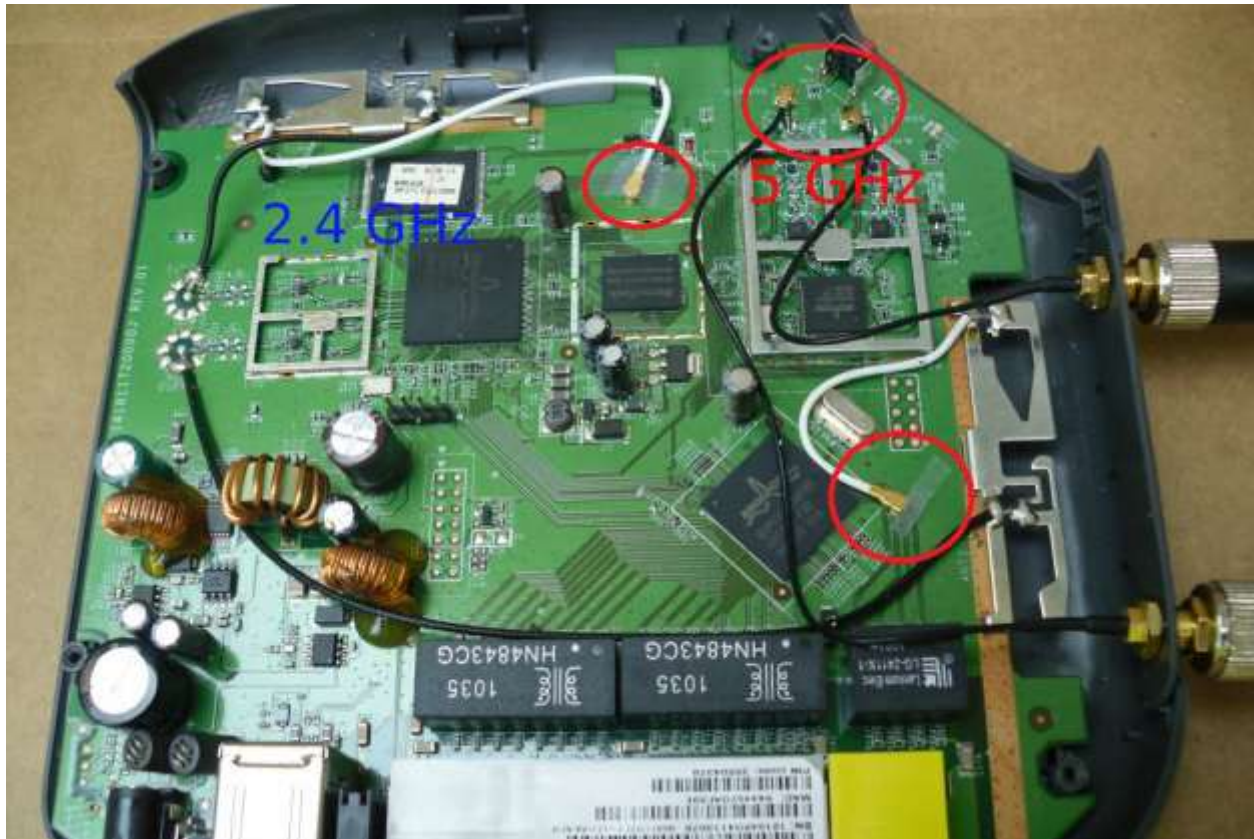


4. Now this part requires some patience.

5. Fitting your new UFL connectors into the little holes can take a little practice, and patience

6. So do this first: Practice removing the original UFL antenna cables and then putting them back on.

7. You will be attaching 2 UFL cables (see images below for reference)



Two external antennas attached to the 5 GHz Frequency Band (no soldering). Notice we have detached the two u.fl internal antenna connectors and taped them to the board.

8. Now you are ready to drill.

10. Mark on the unit with a pen or whatever you want to use, where you want to drill (see image below where the antenna is mounted). Make sure you don't damage the main board by hitting it with a drill!



NUTS SHOWING OR **Another option: Hide the nuts!**
Install the cables without the nuts showing; squeeze the nuts underneath the lip of the case.



11. **Your mark should be just a fraction above center point so the RP-SMA adapter will clear the board.**
<<Very important IF YOU DRILL TOO LOW THE BOARD WON'T CLEAR

12. Drill a smaller hole first with a smaller bit and then go ahead and finish the drilling with the 1/4" drill bit.

13. You may want to get someone to help you hold the unit in place as you drill. Hold the unit vertically on a solid surface before drilling. Take your time. No hurry!

14. After drilling there will be a little plastic left around the inside hole that will need removing. Just use a kitchen knife or other small knife to remove the plastic.

15. Attach the UFL cables and the RP-SMA Plugs and of course the 7dBi Antennas and you are set to go. Do not remove any built in antennas.

Be sure the nut on the RP-SMA plug is nice and tight, otherwise your antennas will flop.

NOTE: When putting the case back together make sure none of the cables get pinched with screws. You can secure them in place by using clear tape.

Enjoy



WIFI Radar Scanner:

<http://www.metageek.net/products/inssider/> (free download)

The WiFi Radar Scanner will show the signal strength of your router. We recommend using it before and after installing the antennas to see the improvement of the signal strength. It can also show you which antenna position and router location can give you the best signal. The closer to -0db the better the signal, and the closer to -100db the worse.

