

Thank you for purchasing the Antenna Mod Kit for your Linksys router. First we will show you how to install the antennas for your router. We will also provide you with a tool that will help test the performance of your newly modified router.

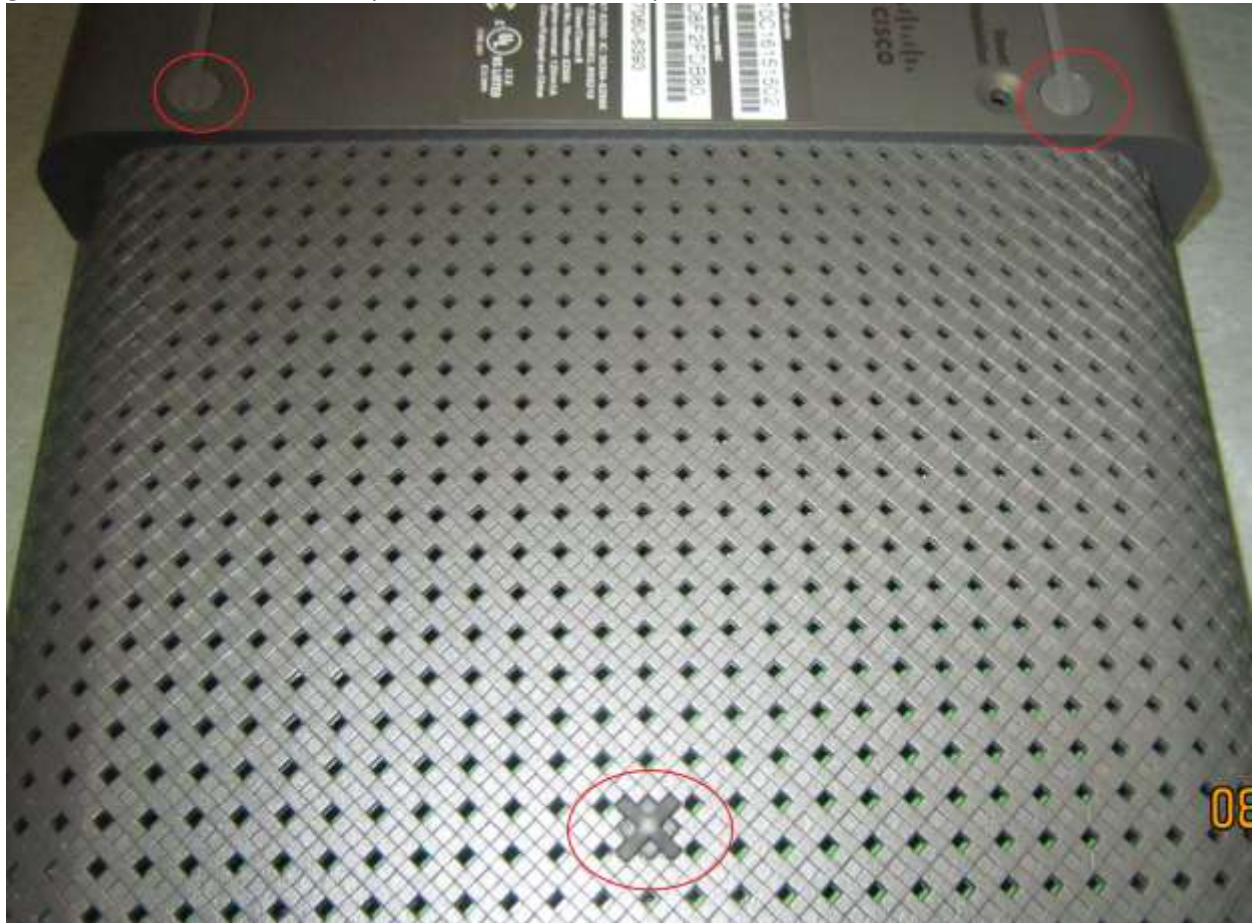


E3200 Antenna Installation Instructions:

1. No Soldering required (here is the list of tools you will need)
Phillips screw driver
8mm Socket with a ratchet
8mm Open End Wrench

Butter Knife

2. Open the unit. Remove the rubber stands first (the two top ones don't fully remove it just pick it up to get to the screw) and then, all you need is a small Philips screw driver.





The top and bottom of the router separate nicely with some help from you.

Wedge them apart with a kitchen knife or an object that is not sharp.

Begin prying the unit open just down from the vent holes.

The case is on tight, so pry open around the edges a little at a time.

Be patient; she'll eventually pop open for you.

If you brake couple of clips don't worry about it, happens to the best of us.



3. Remove the UFL antenna connectors.

4. Now this part requires some patience.

5. Fitting your new UFL connectors into the little holes can take a little practice, and patience

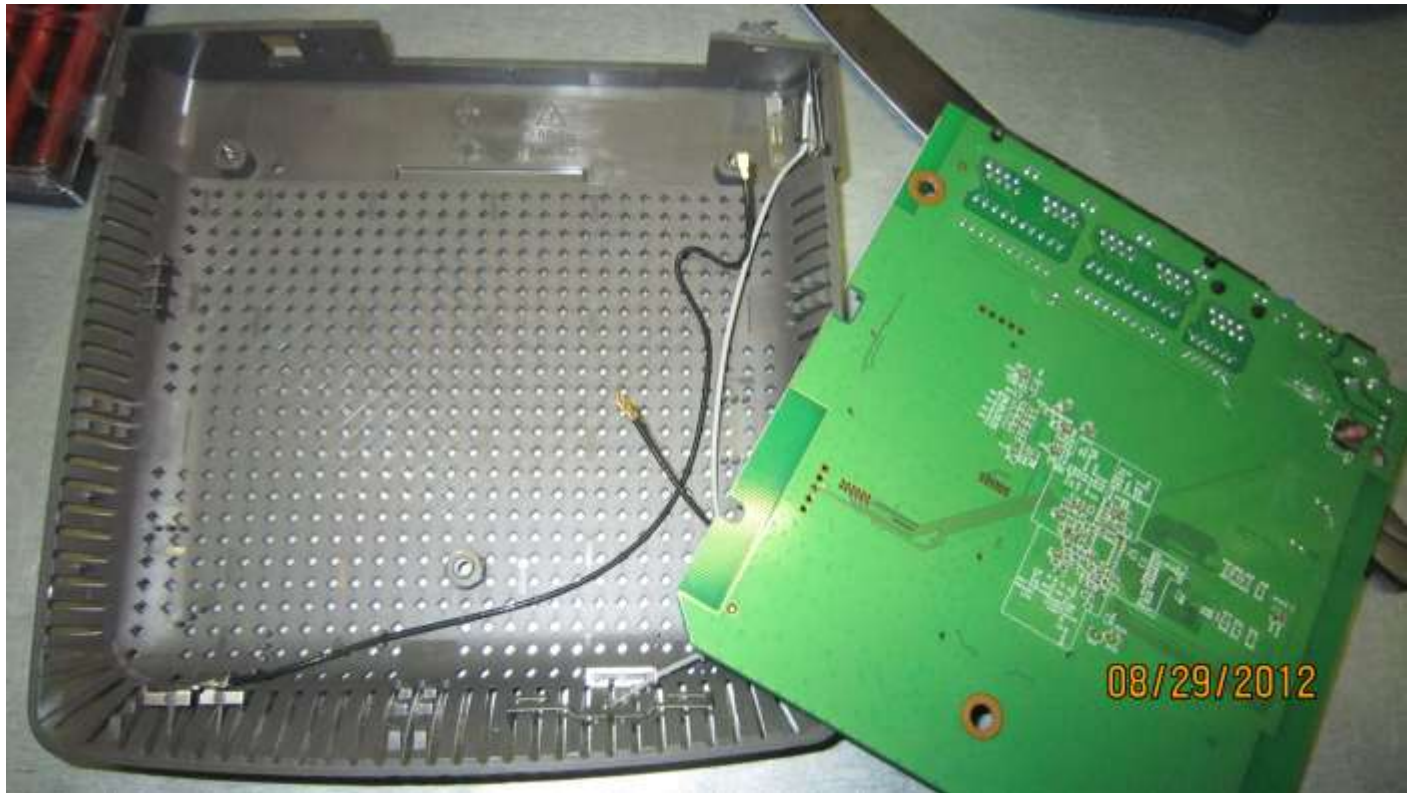
6. So do this first: Practice removing the original UFL antenna cables and then putting them back on.

7. You will be attaching 2 UFL cables (see images below for reference)

8. Now you are almost ready to drill.

9. Detach the 3 stock UFL cables and get the board out the way of the drilling.





10. Mark on the unit with a pen or whatever you want to use, where you want to drill (see image bellow where the antenna is mounted). Make sure measure it with main board in place to see how much space you need to clear it. If you drill too low you won't be able to insert the U.FI cables!



11. Your mark should be just a fraction above center point so the RP-SMA adapter will clear the board.
12. Drill a smaller hole first with a smaller bit and then go ahead and finish the drilling with the 1/4" drill bit.

13. You may want to get someone to help you hold the unit in place as you drill. Hold the unit vertically on a solid surface before drilling. Take your time. No hurry!



14. After drilling there will be a little plastic left around the inside hole that will need removing. Just use a kitchen knife or other small knife to remove the plastic.

17. Attach the UFL cables and the RP-SMA Plugs and of course the Antennas and you are set to go. Do not remove any built in antennas.



Be sure the nut on the RP-SMA plug is nice and tight (use 8mm wrench and socket here), otherwise your antennas will flop.

antenna position and router location can give you the best signal. The closer to -0db the better the signal, and the closer to -100db the worse.

