

# INITIAL CONFIGURATION FOR TUBE2H

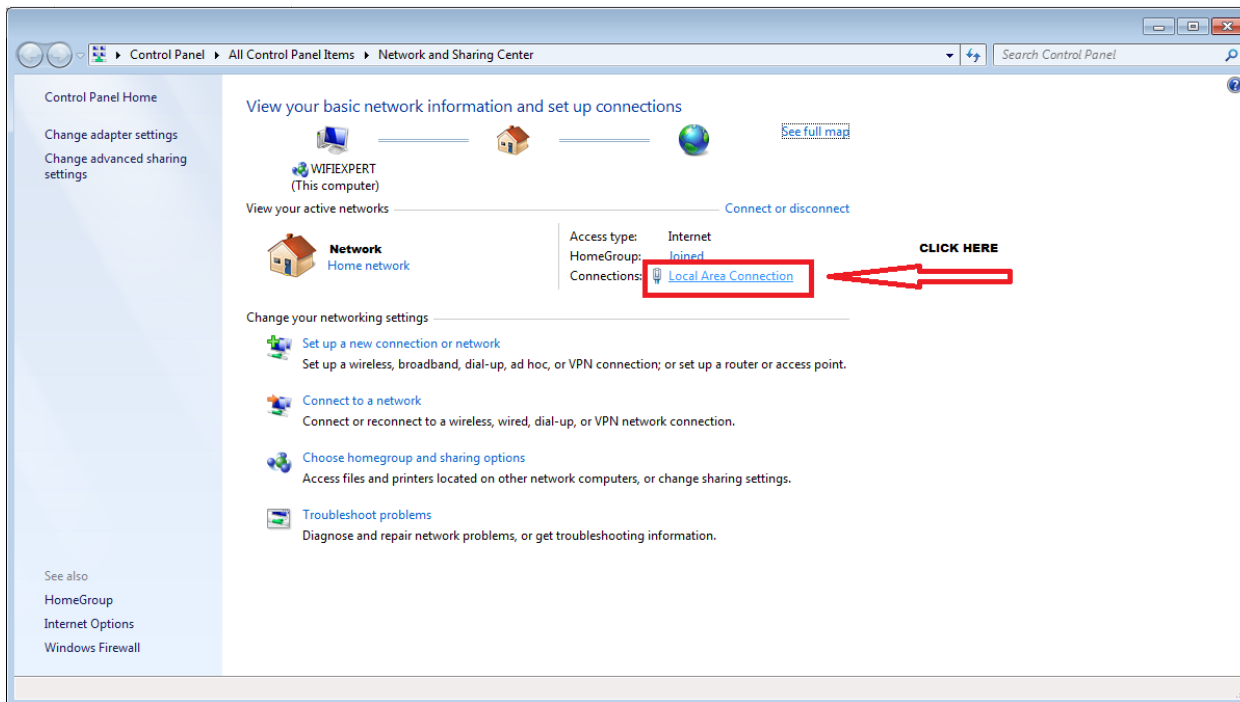
## SET STATIC IP in WINDOWS 7

STEP 1: Make sure your WiFi Disabled and connect to Tube2H using Cat5e cable through PoE Black box. Yellow cable goes to LAN and Your PC, Black to PoE side and Tube 2H.

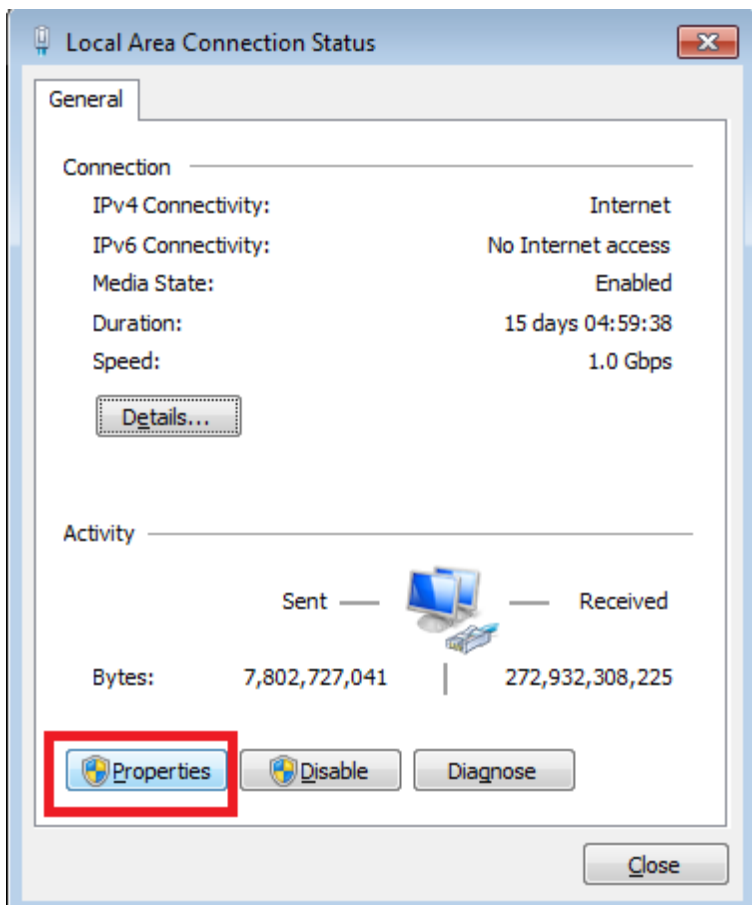
STEP 2: Open Network Sharing Window (see bellow). Click on start and type in network sharing.



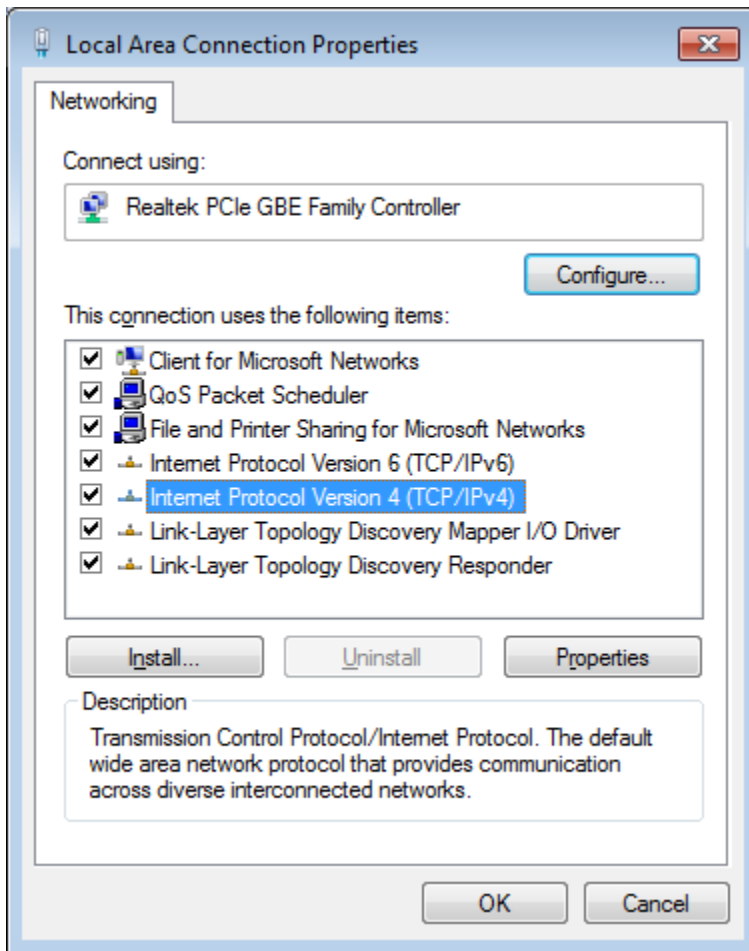
STEP 3: Click on Local Area Connection



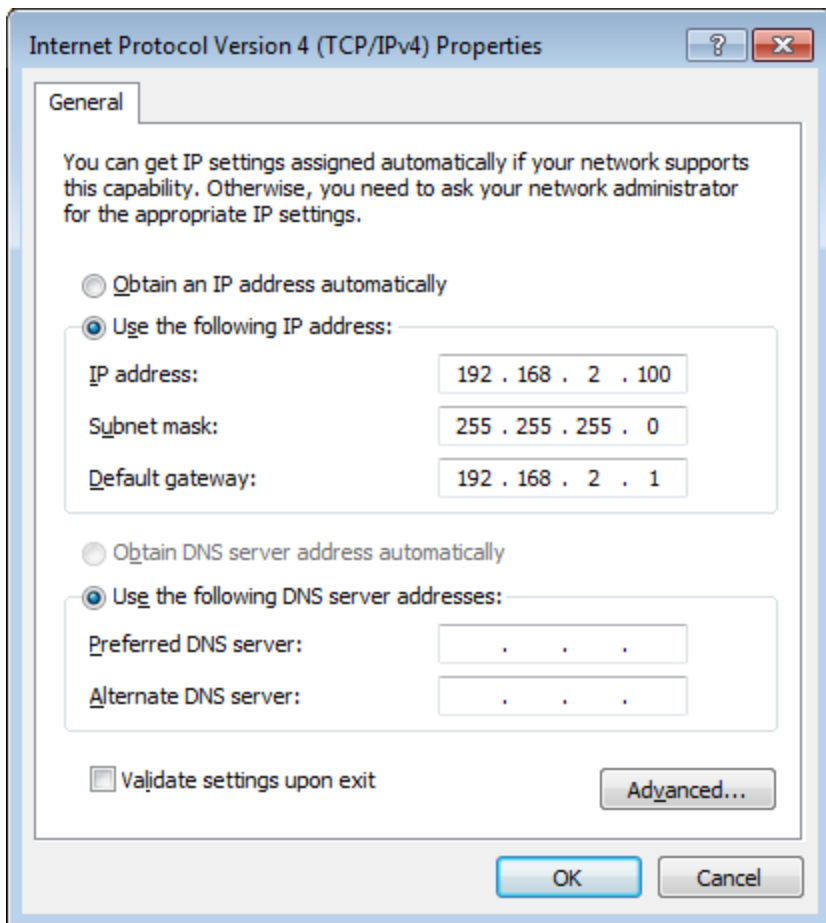
Step 4: Click on Properties (see below).



STEP 5: Double click IPv4



STEP 6: CLICK ON USE FOLOWING IP and INPUT IP, MASK, GATEWAY



STEP 7: CLICK OK.

**ONCE TUBE2H is configured correctly please return to this screen and select 'OBTAIN AN IP AUTO'**