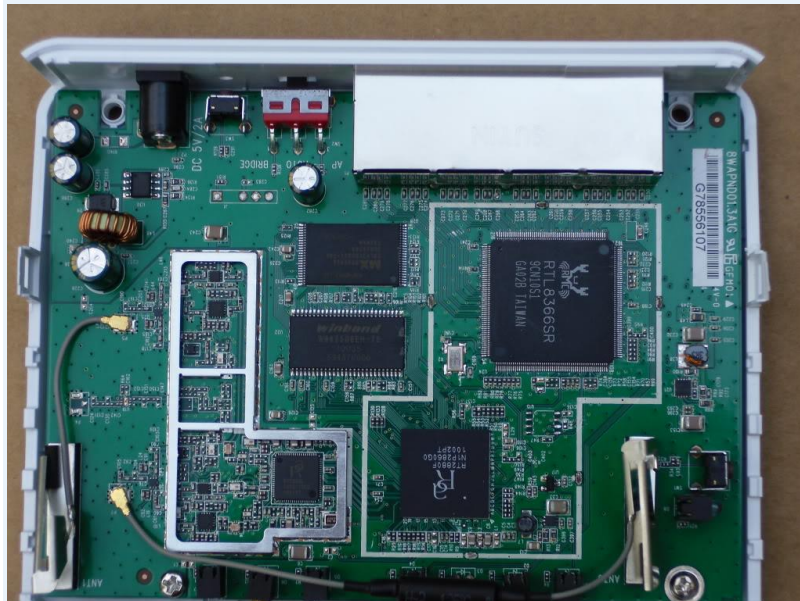


Directions for removing the cover

Remove the two rubber tips on the back of the unit (ethernet port side). They pop off easily and can be easily Replaced.

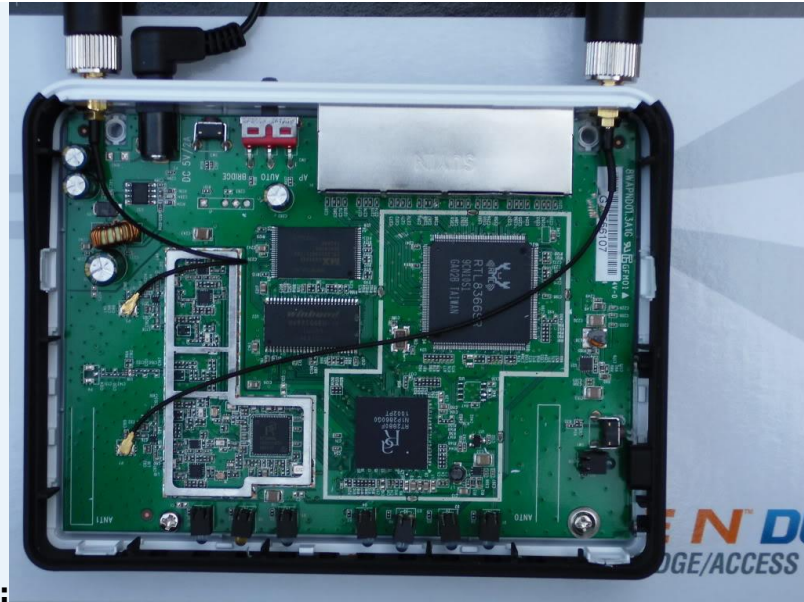
Only two need to be removed to open the case.

To remove the screws, use a torque wrench or the sharp end of a kitchen knife or a thin bladed screw driver. *To remove the houses* Look at the side of the router. You will see four rectangular air vents. With a dull kitchen knife, insert the end into one of the holes and turn. The case will loosen and you are set to go.



Note: The two internal antennas are called type PIFA ([Planar Inverted F Antenna](#) , antenna planar inverted F)

Would it be possible to change mounting two omnidirectional antennas RP-SMA external 7 dBi and even replacing their ponytails (pigtailed) RP-SMA female <-> U.FL female that usually come each bolt and knurled mounting panel.



The latest models are distributed with hot glue covering the U.FL connector and you have to be careful because removing it might slip off the connector itself and / or neighbors micro components.

