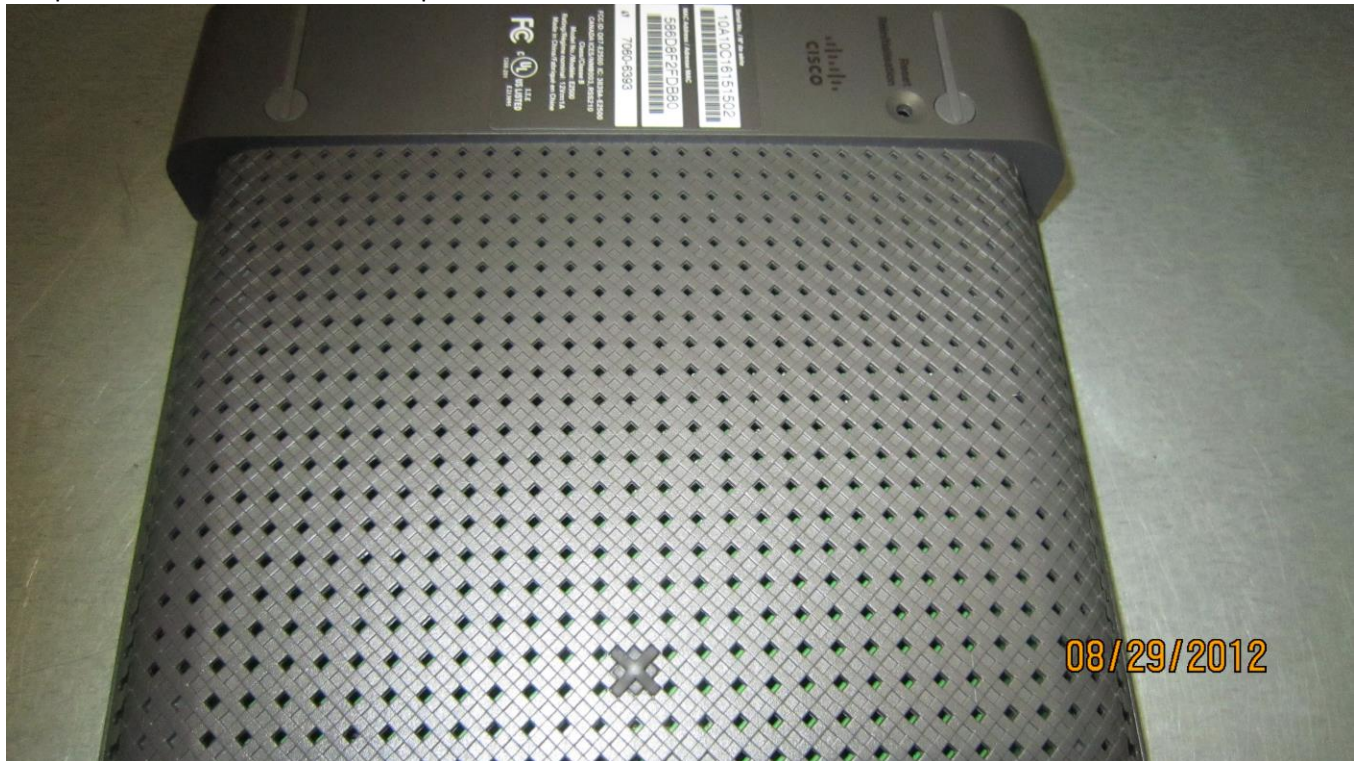


Thank you for purchasing the Cooling Fan Mod Kit for your Linksys router. We will show you how to install the cooling fan for your router.



### E2500 Cooling Fan Installation Instructions:

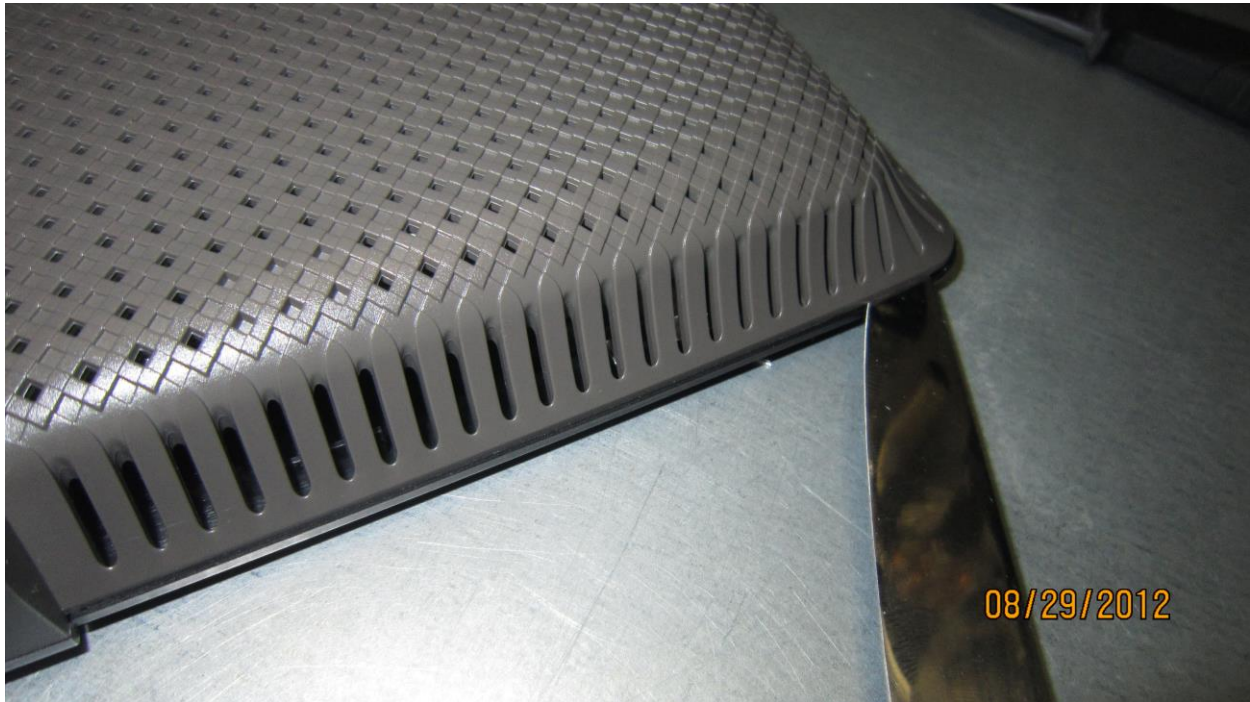
1. Soldering required
2. Open the unit. You can use Phillips screwdriver



The top and bottom of the router separate nicely with some help from you.



**Wedge them apart with a kitchen knife or an object that is not sharp.**



**Begin prying the unit open just down from the vent holes.**

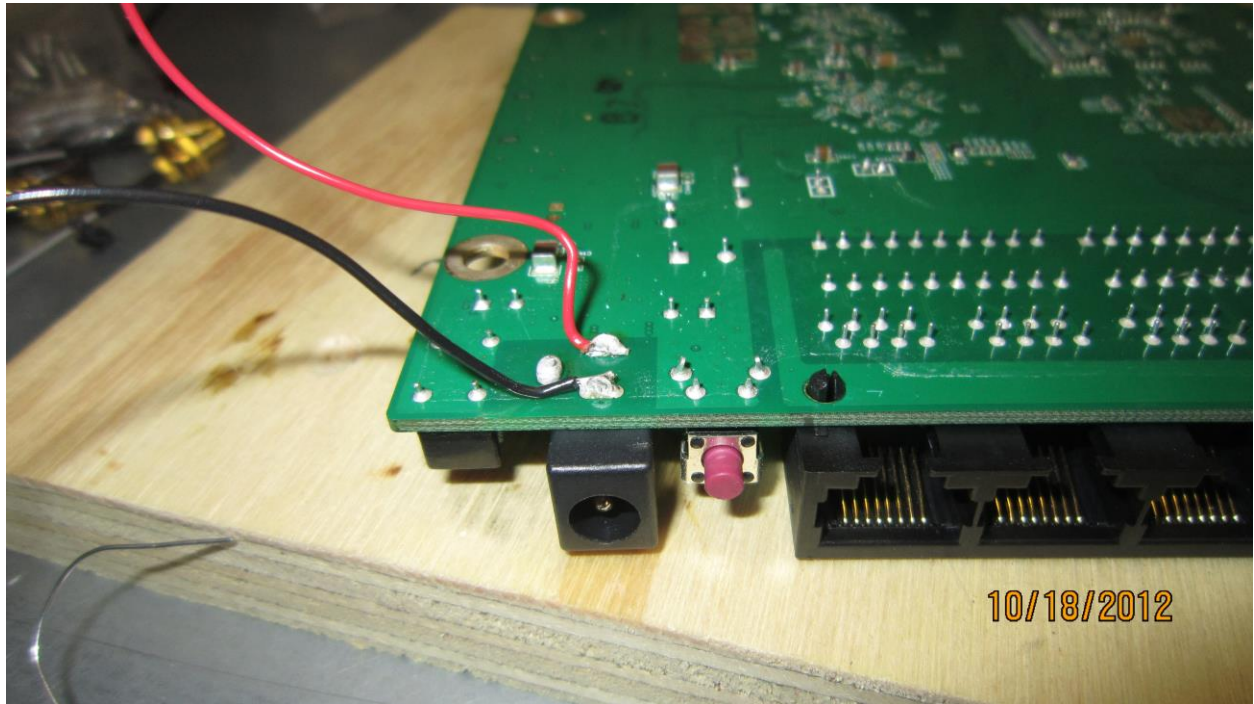
**The case is on tight, so pry open around the edges a little at a time.**

**Be patient; she'll eventually pop open for you.**

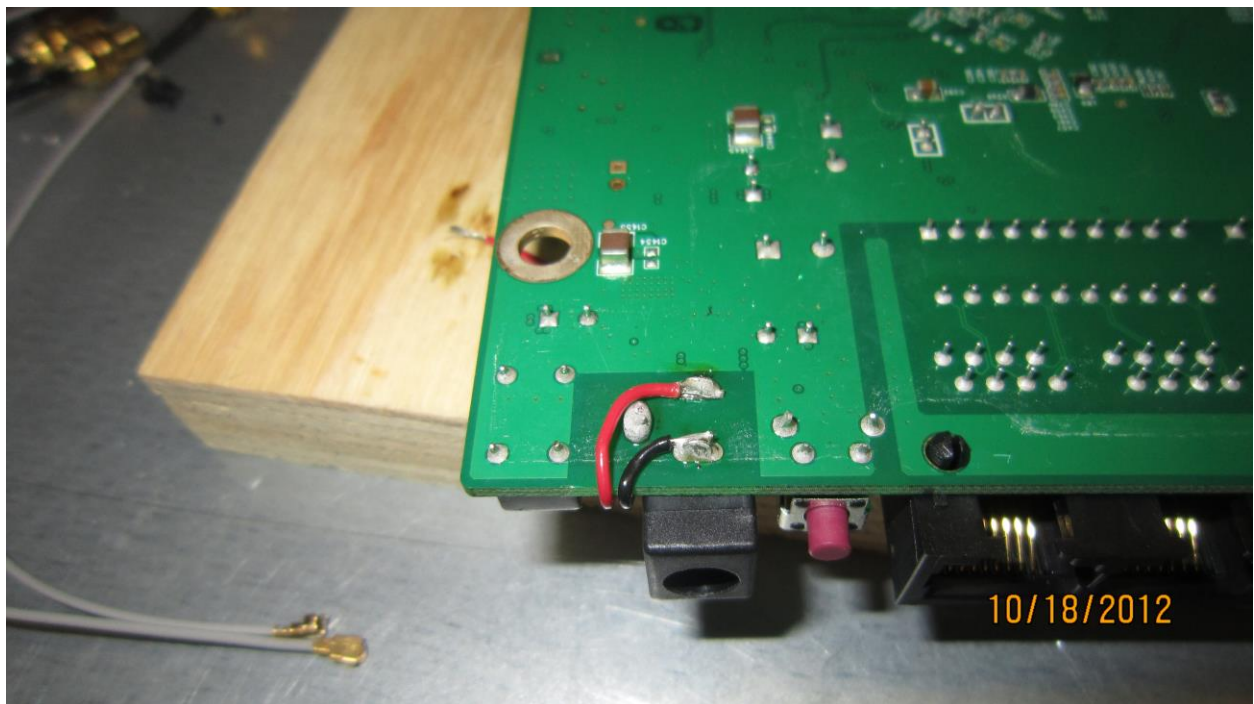
**If you brake couple of clips don't worry about it, happens to the best of us.**

3. Remove the UFL antenna connectors.

4. Now remove the U.FI connectors on the left side of the board and take the board out carefully. Note the left side is still connected.
5. You will need to solder 2 wires, see images bellow. Note where Black and Red wires must go.



Tuck the wires in and flip them to the other side of the board. See image bellow.





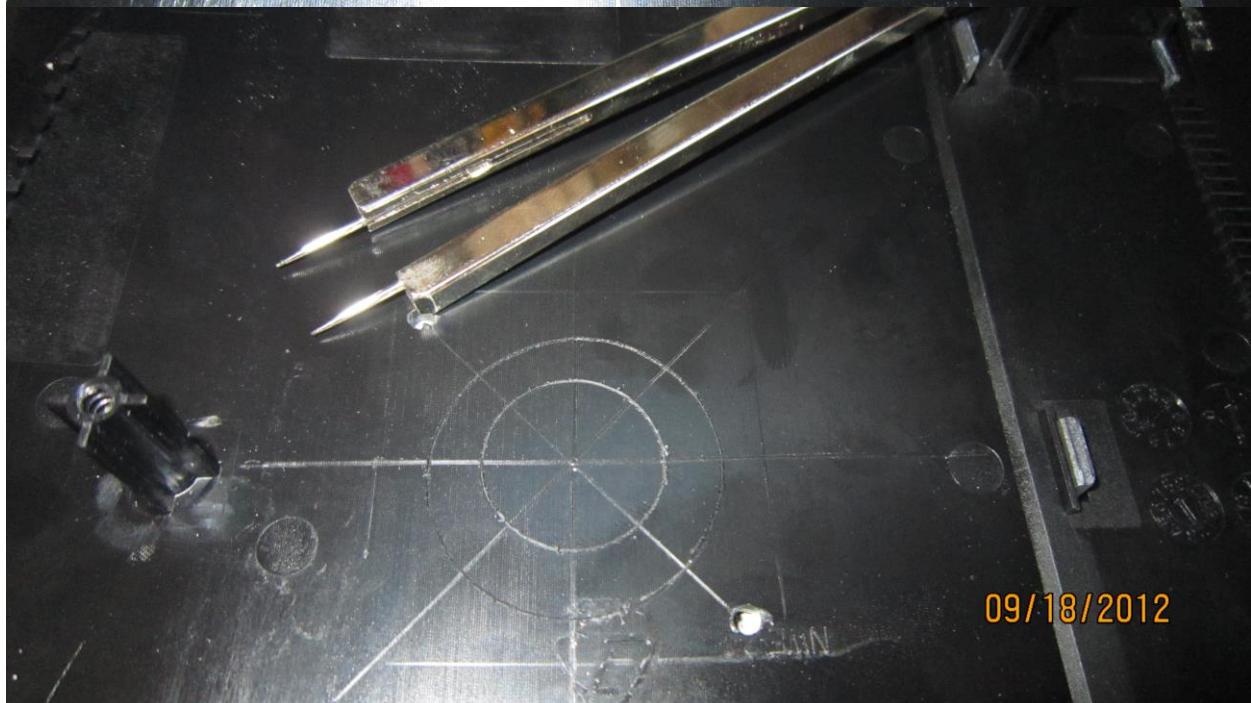
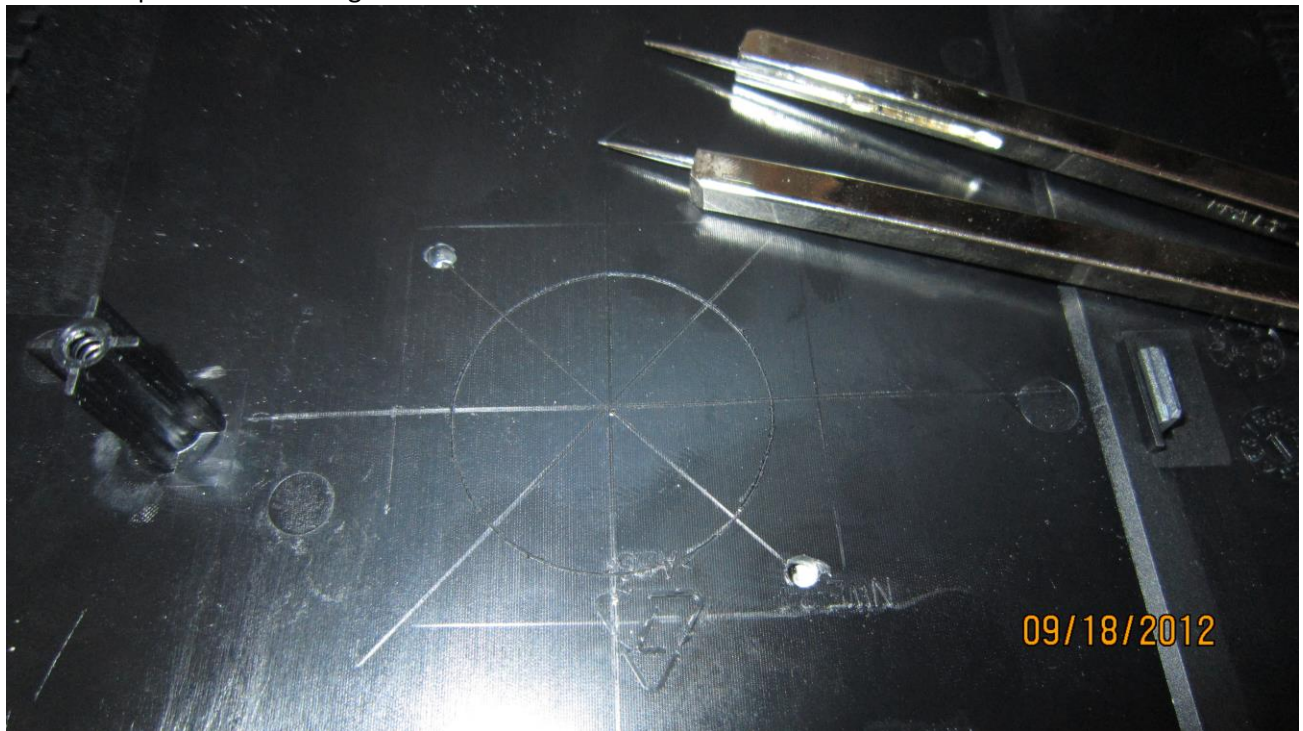
Next step is drilling holes for the fan mount screws. Use 7/64 inch drill bit (or closes you can get to that)



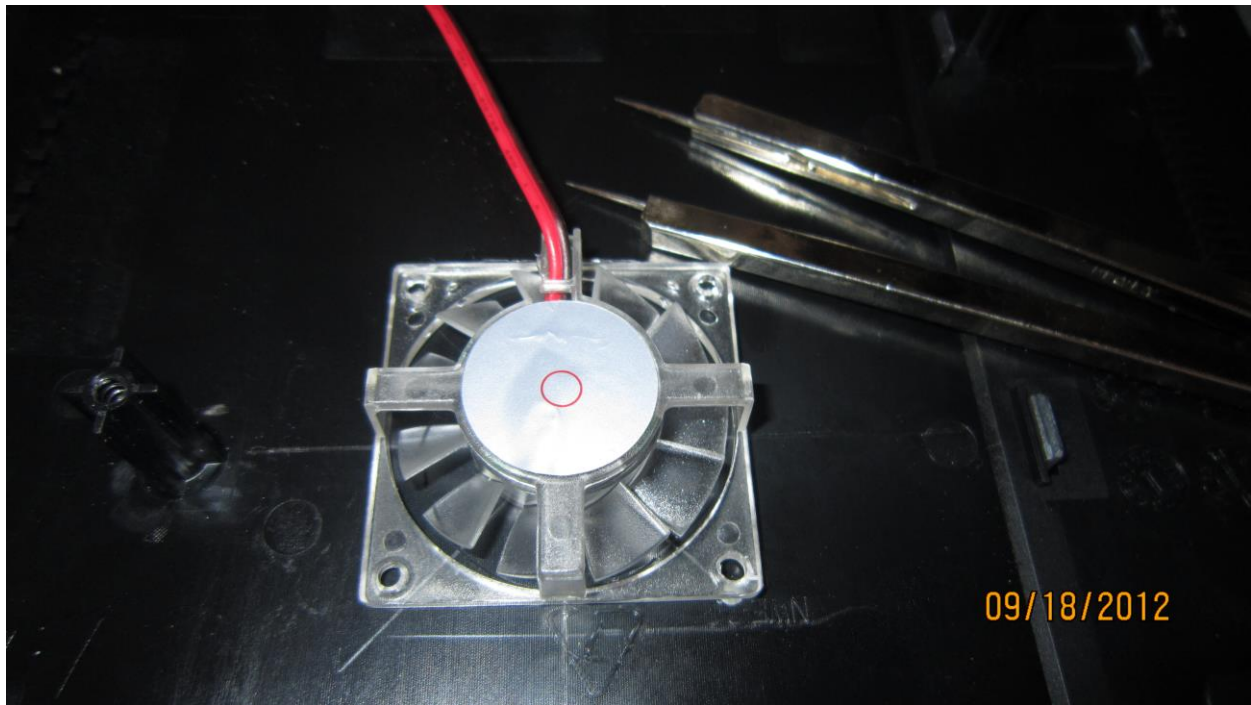
Or you can do 5/16 holes like this: (e3000 shown)



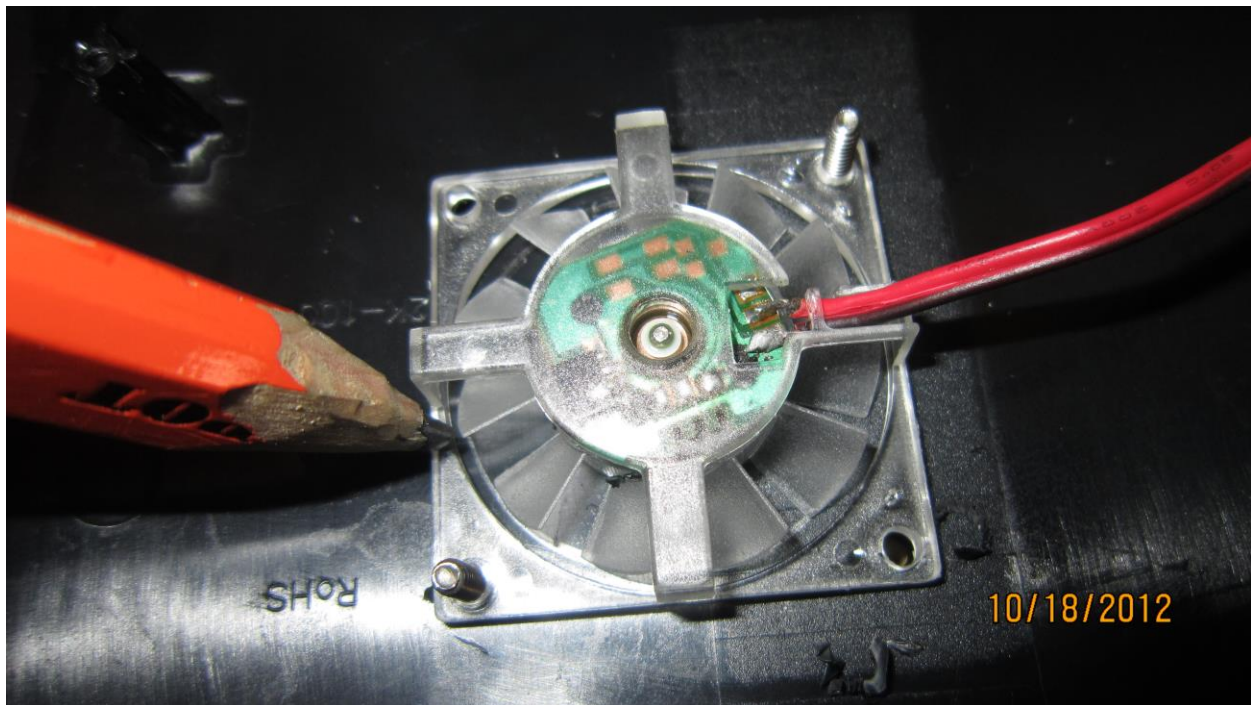
The fan mounts right in the middle of the case to avoid interference with any internal components and to be on top of CPU. See images bellow.



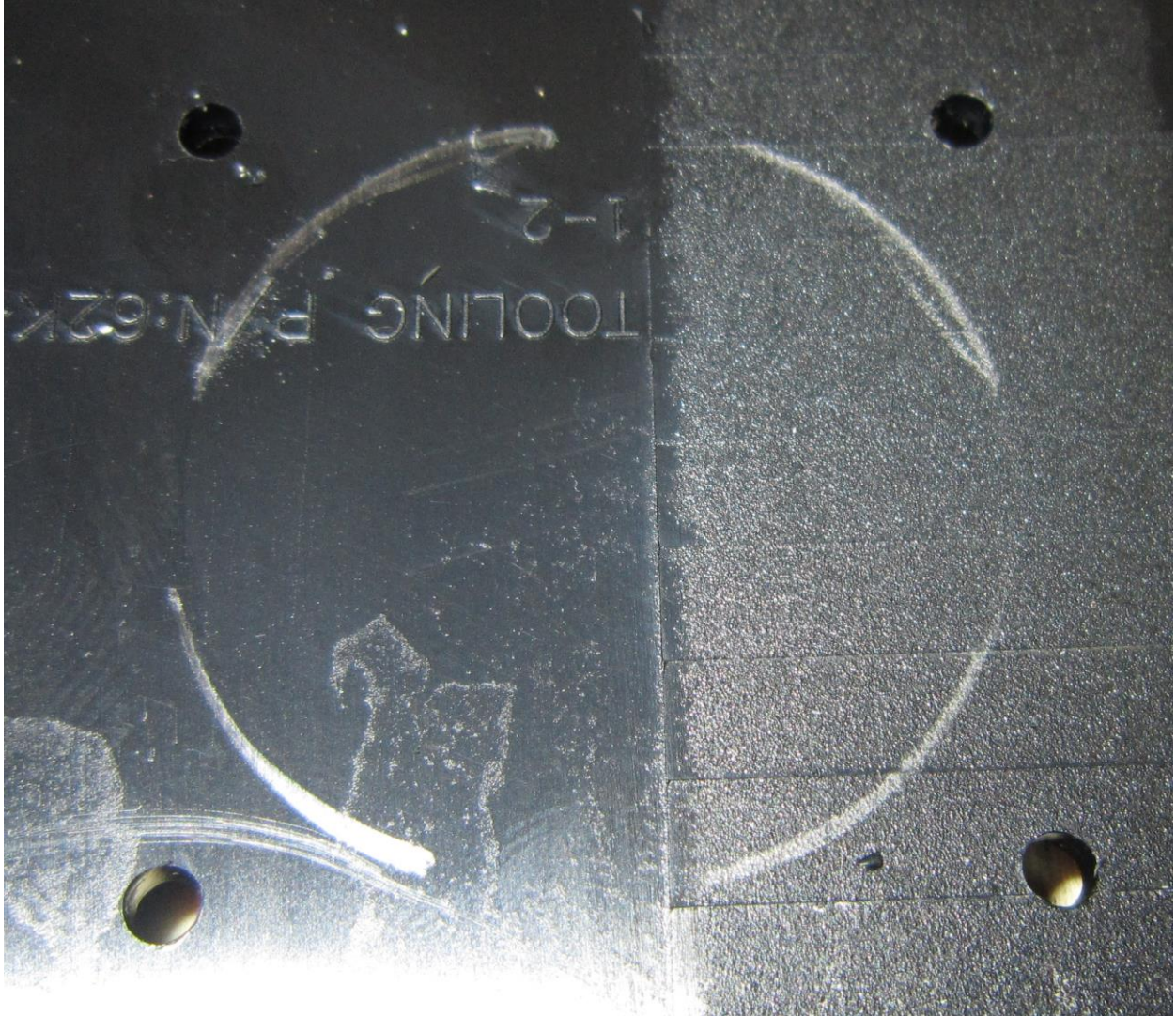




Once 4 holes are drilled you can mark the fan location with a pencil.

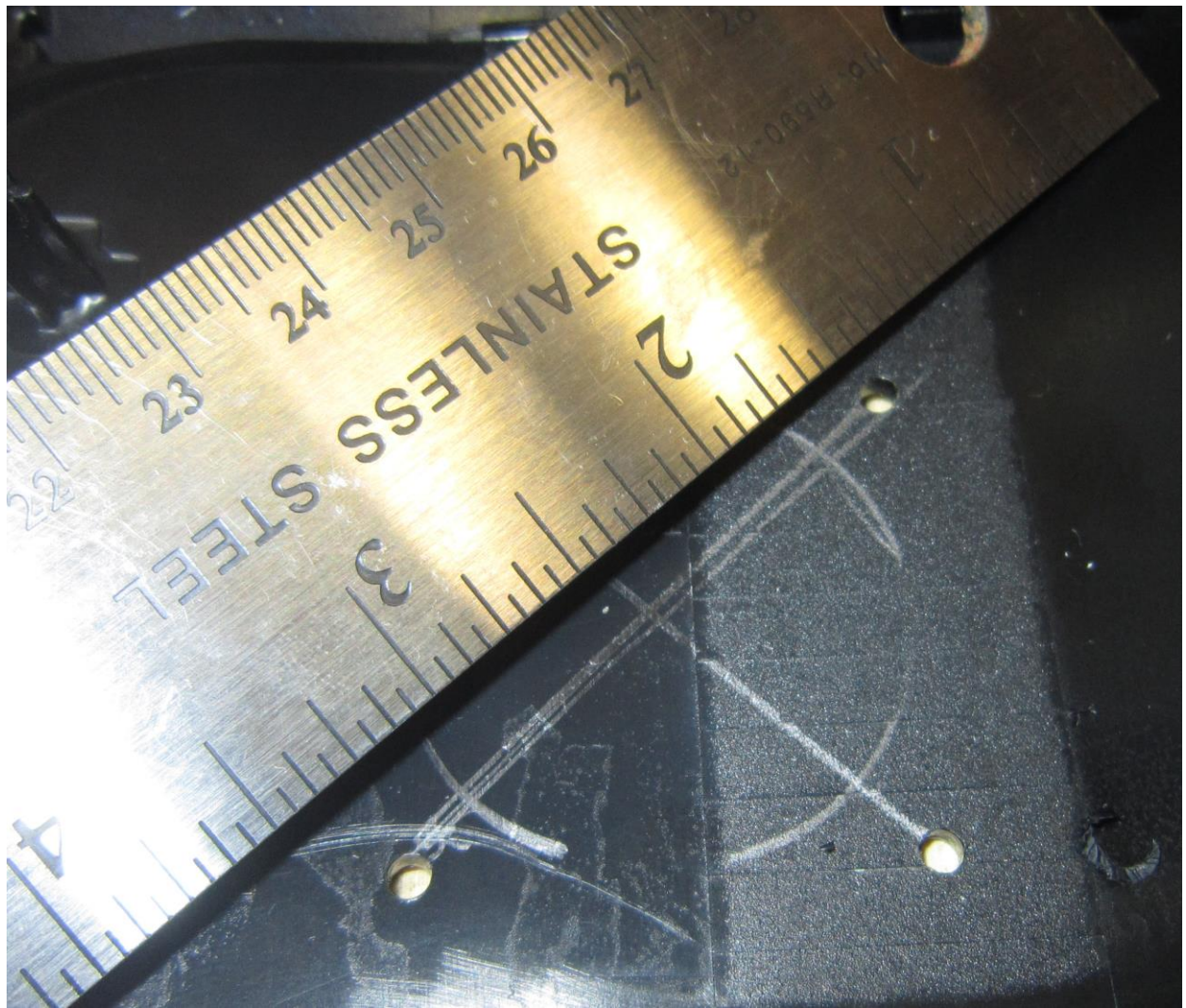


Remove the screws and draw the target using a sharp pencil or a pick. Make sure you do it from the inside of the case.



Use the ruler to draw straight lines from each hole.

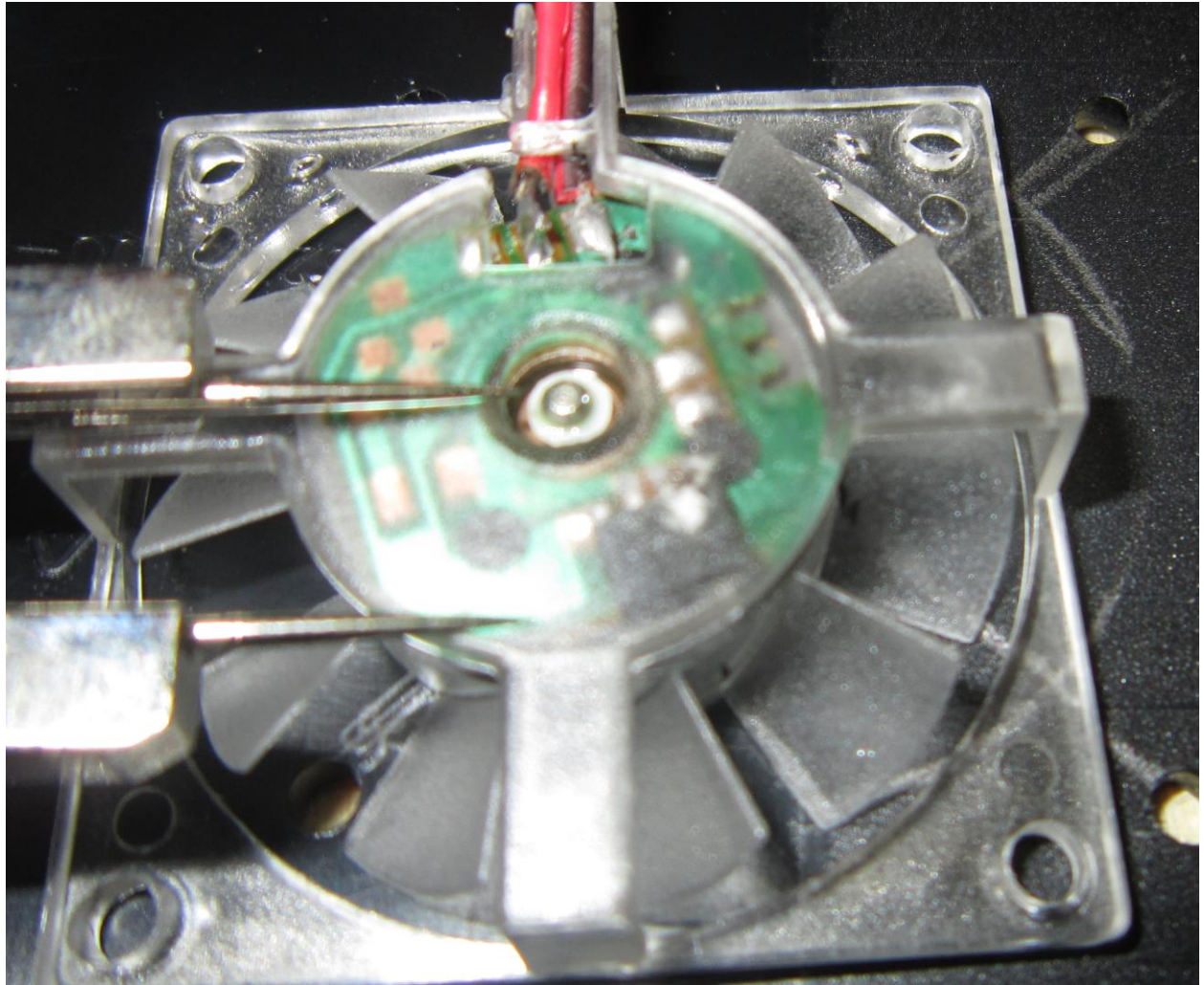


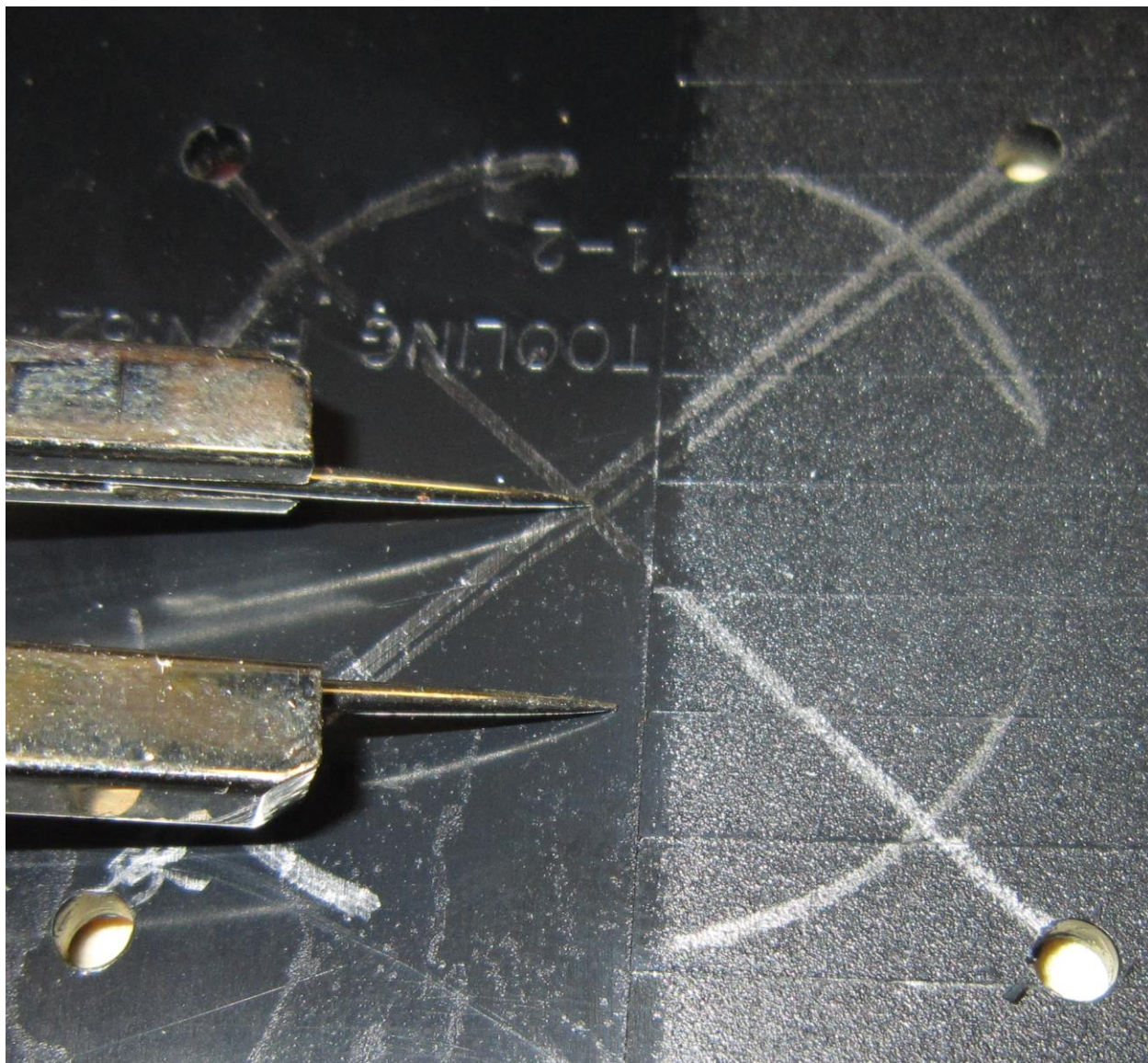




Measure the distance between the center of the fan to the opening.







Now draw the internal circle.





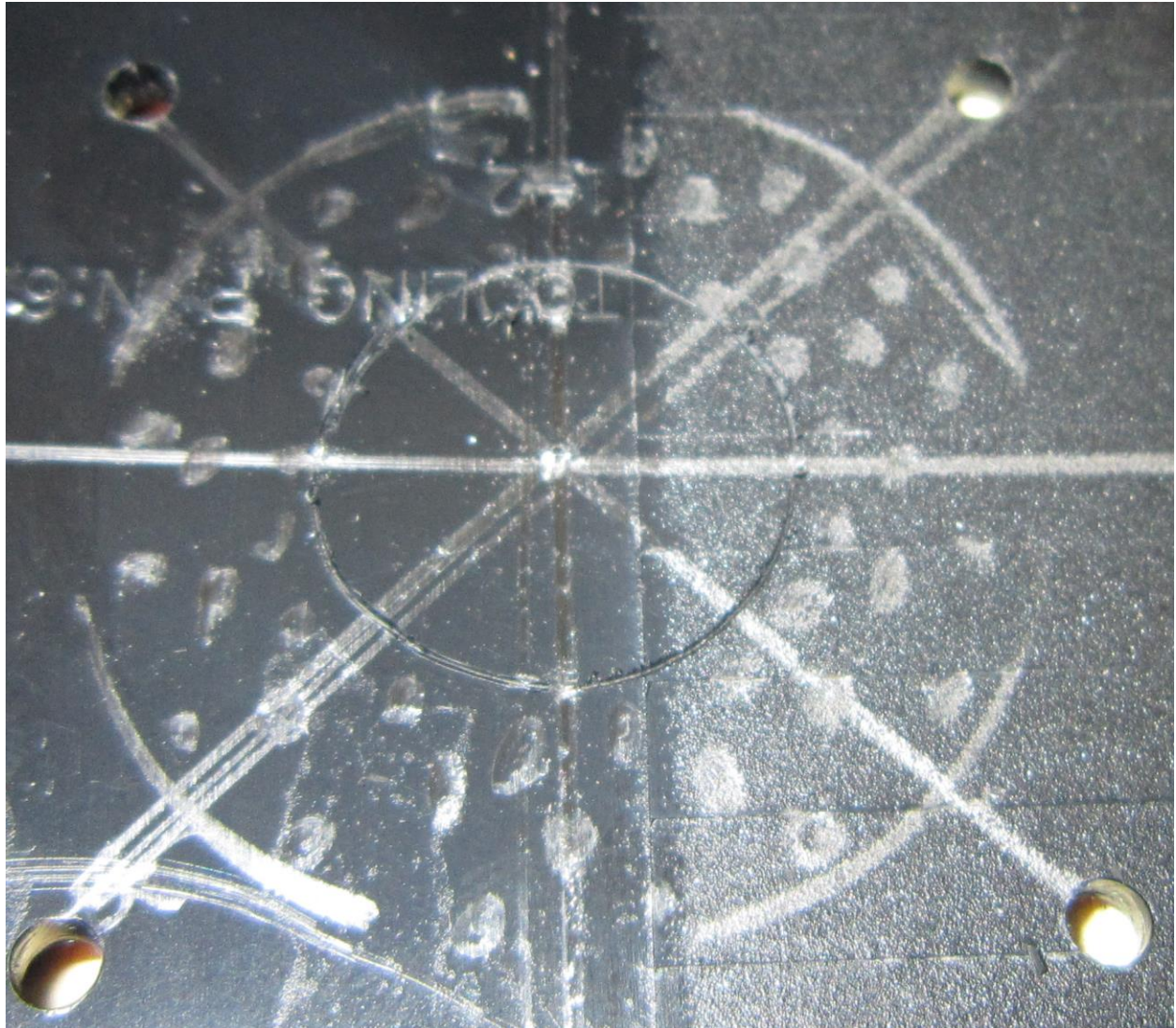
Now draw the straight lines through the circle



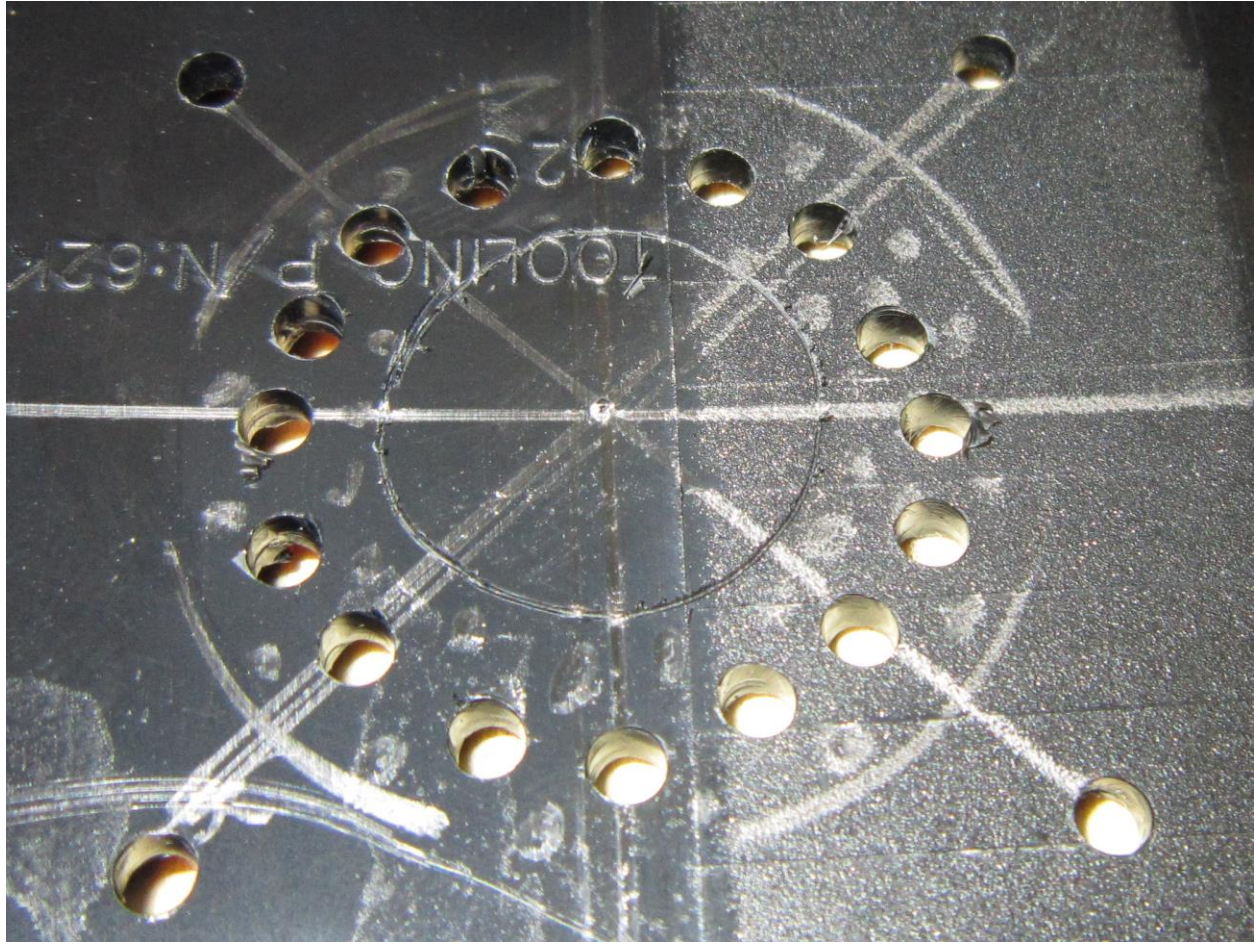


Now mark the drill holes. Group them as you wish.





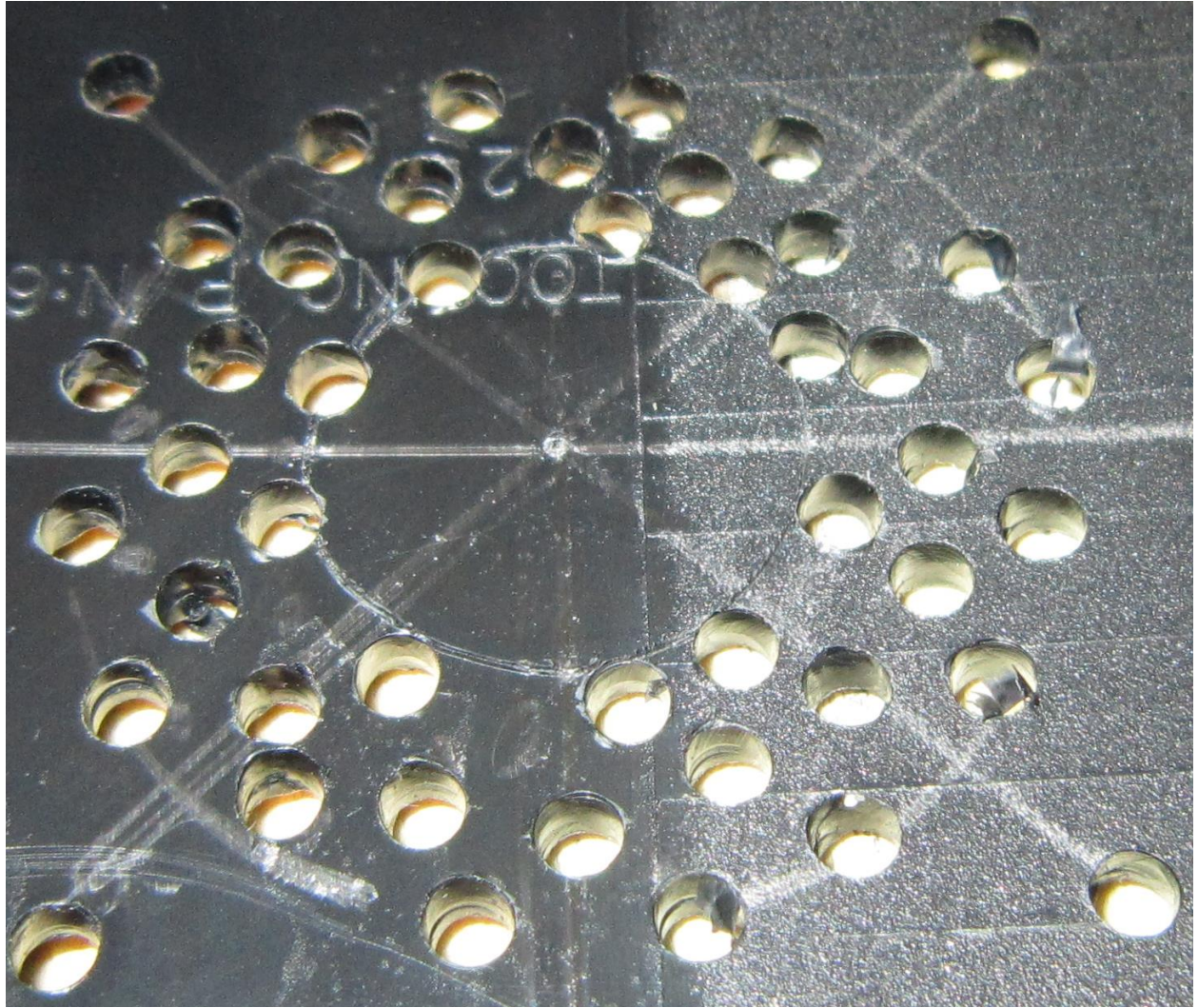
Drill the first set of holes right in the middle.







Go ahead and drill the rest of the holes now.







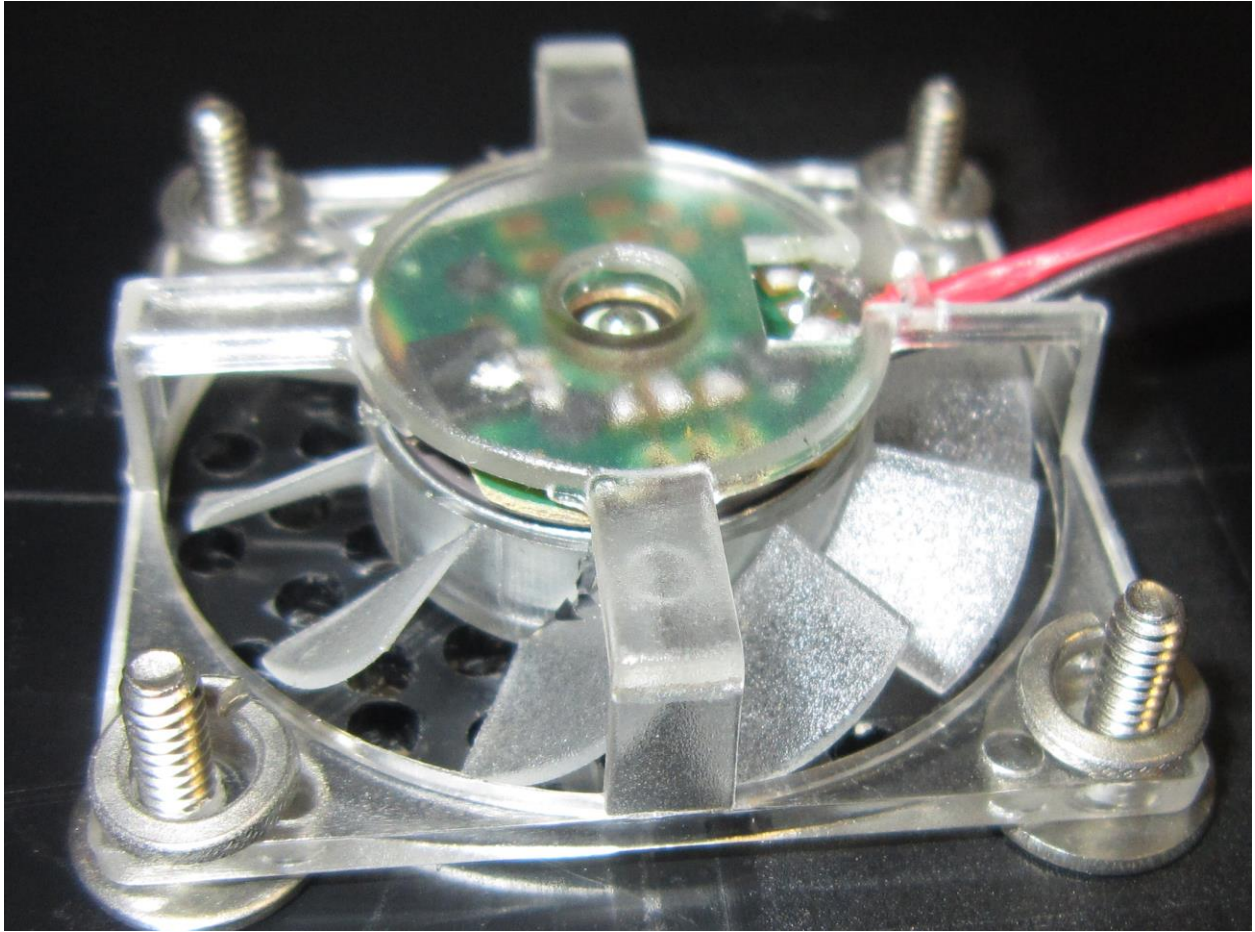


Now time to mount the fan.

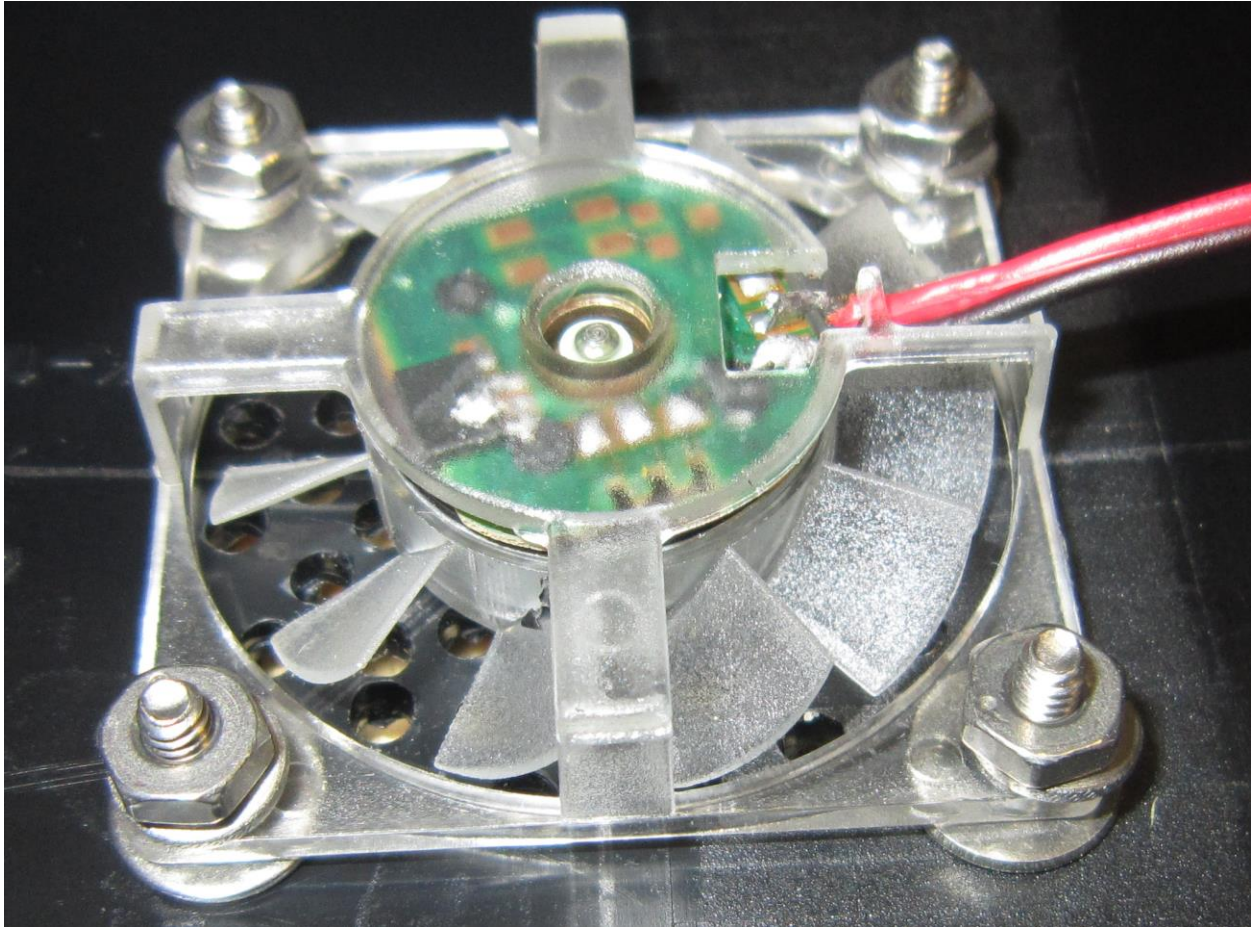
Place all screws then washers then fan then lock washers and finally the nut.

Make sure none of the fan wires get on the way of the fan as it will make a dragging sound.





Make sure to follow the sequence as the fan won't have clearance.



Tighten the screws from the top using flat screw driver. The lock washers will hold the nut in place.

Make sure not to over tighten as it might damage the fan.

You are done now.

Before putting the fan together turn the router on to make sure the fan is not making any dragging noise.

NOTE: When putting the case back together make sure none of the cables get pinched with screws or case. You can secure them in place by using clear tape.

Enjoy



## DD-WRT:

For optimal performance we recommend replacing the Linksys firmware with DD-WRT. This is a free third party firmware that will help turn your \$60 router into a powerful, highly configurable \$600 router.

Please note only works for 2.4 Ghz MODE

[http://www.dd-wrt.com/wiki/index.php/Linksys\\_E2500](http://www.dd-wrt.com/wiki/index.php/Linksys_E2500)

This is for advance users only.

## WIFI Radar Scanner:

<http://www.metageek.net/products/inssider/> (free download)

The WIFI Radar Scanner will show the signal strength of your router. We recommend using it before and after installing the antennas to see the improvement of the signal strength. It can also show you which antenna position and router location can give you the best signal. The closer to -0db the better the signal, and the closer to -100db the worse.

