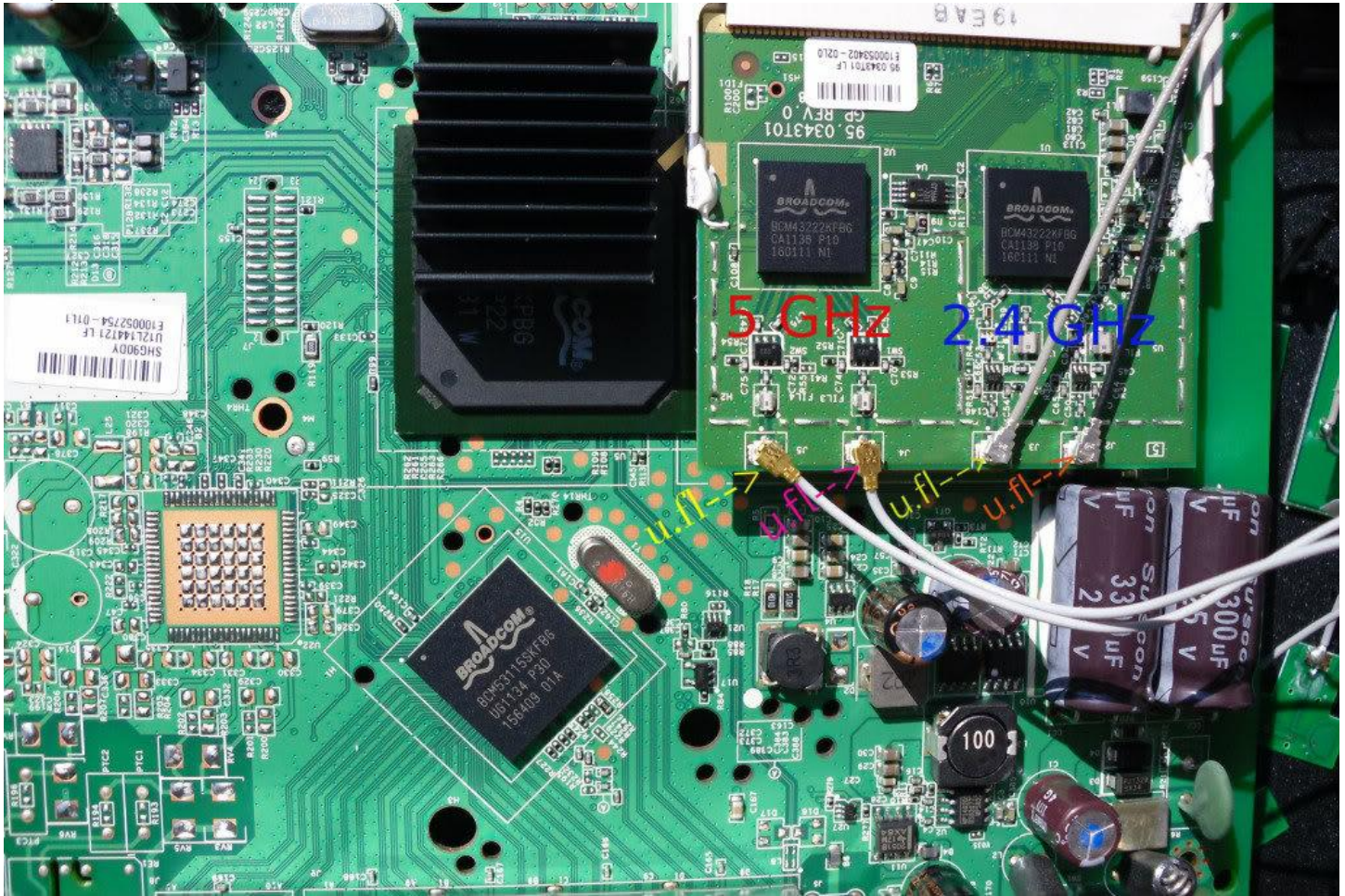


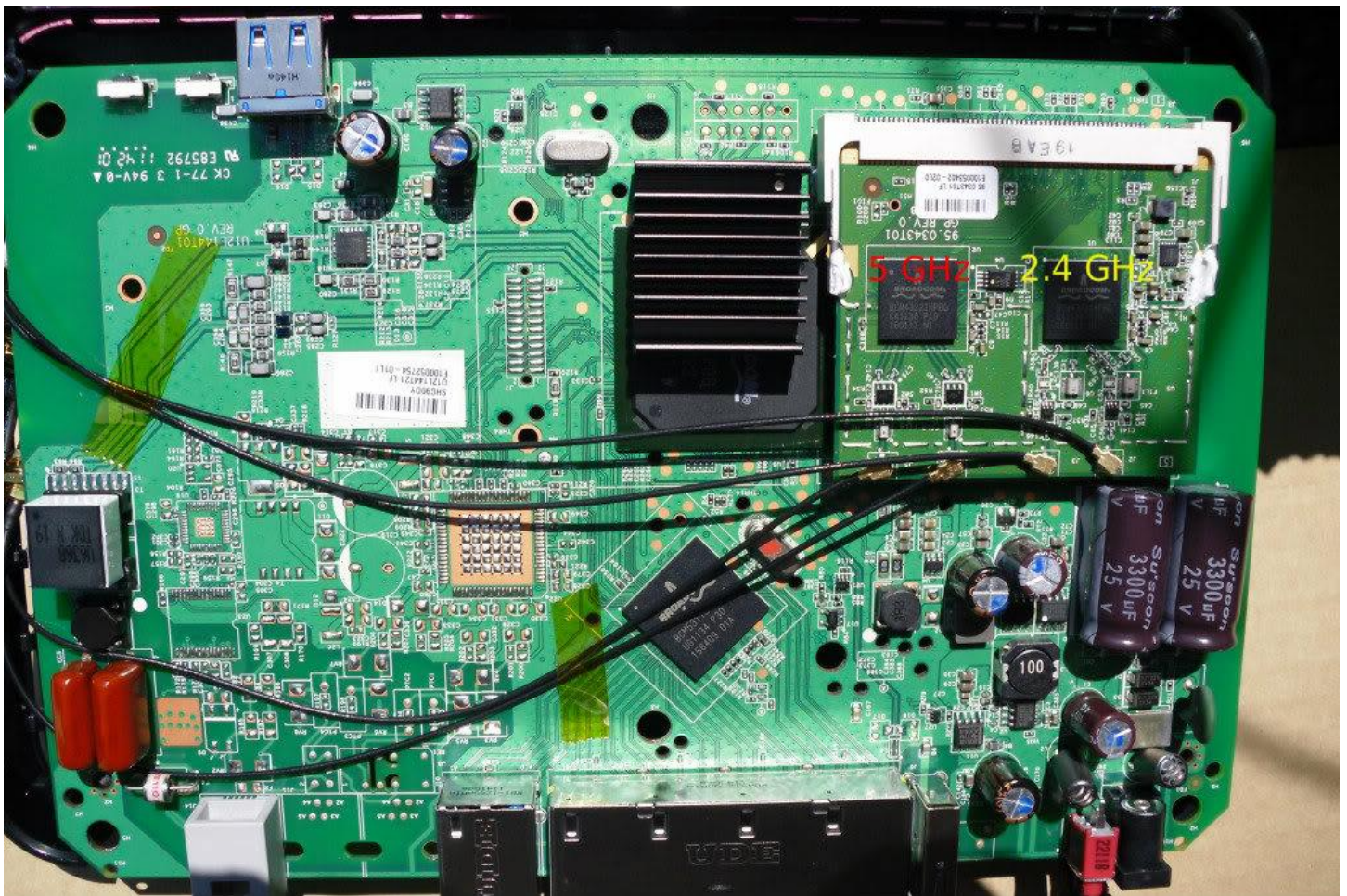
Thank you for purchasing Antenna Mod Kit for your Netgear router. You will see a tremendous improvement in both the signal strength and performance of your wireless network after you complete the steps described in this tutorial. First we will show you how to install the antennas for your router. Finally we will provide you with a tool that will help test the performance of your newly modified Router.



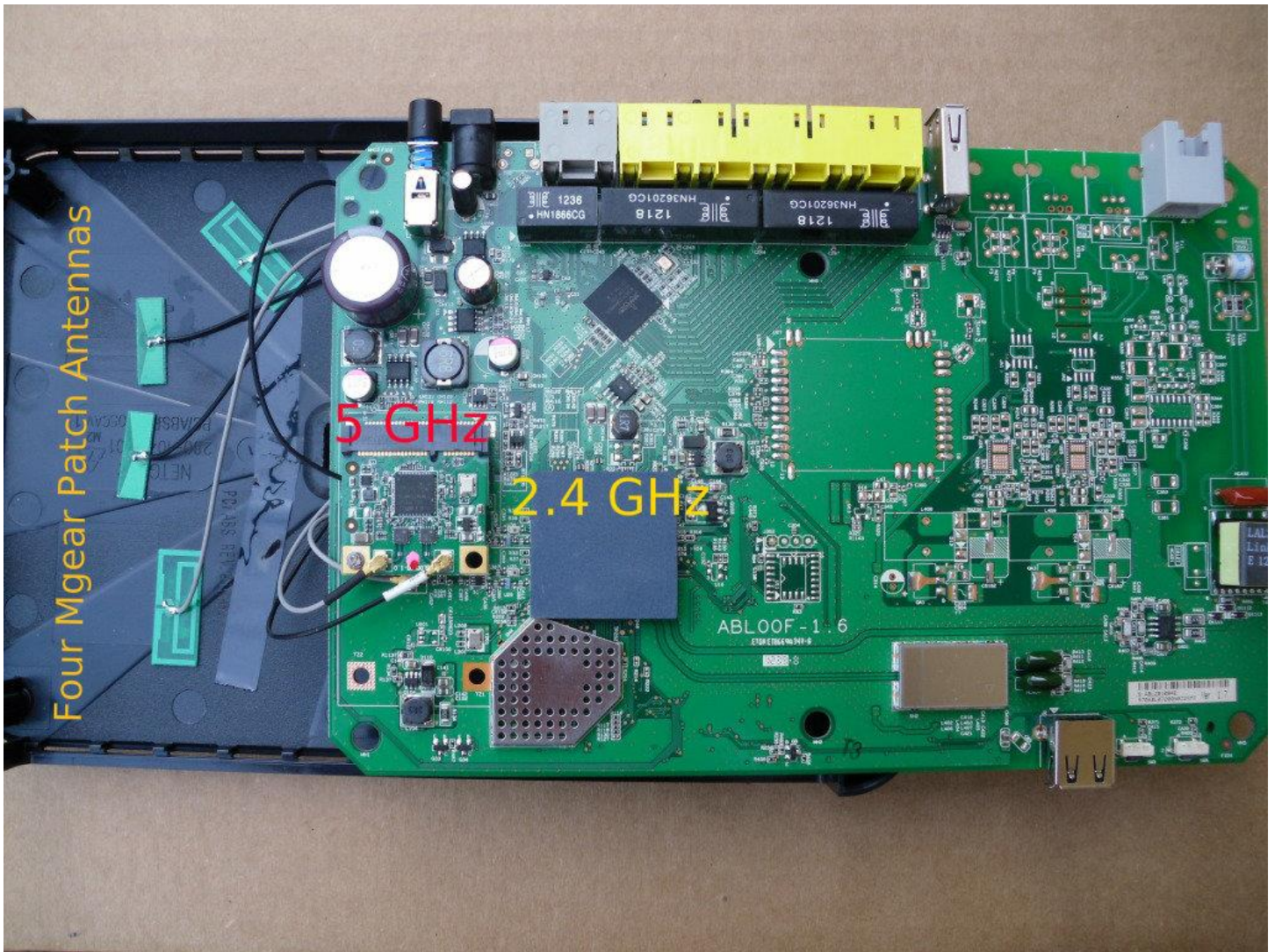
Netgear DGDN3700v1 and v2 Antenna Installation Instructions:

1. No soldering required
2. Open the unit. You can use a torque wrench.



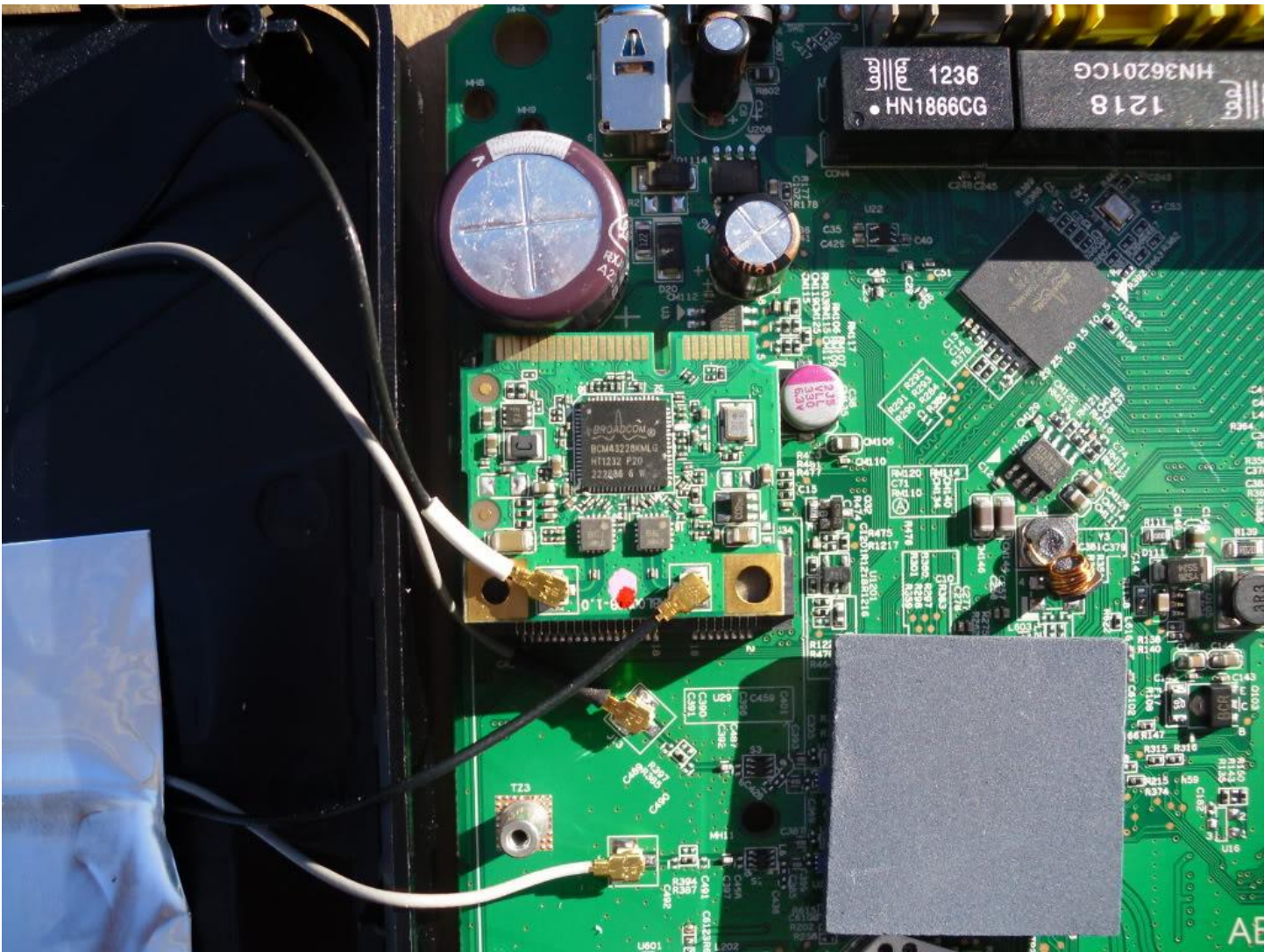


Inside of the Netgear DGDN v.1



Inside of the Netgear DGDN v.2





Before the modification.

(Version 1 is different all 4 cables on top, Version 2 you need to remove 1 screw to get to 2nd pair of connectors)

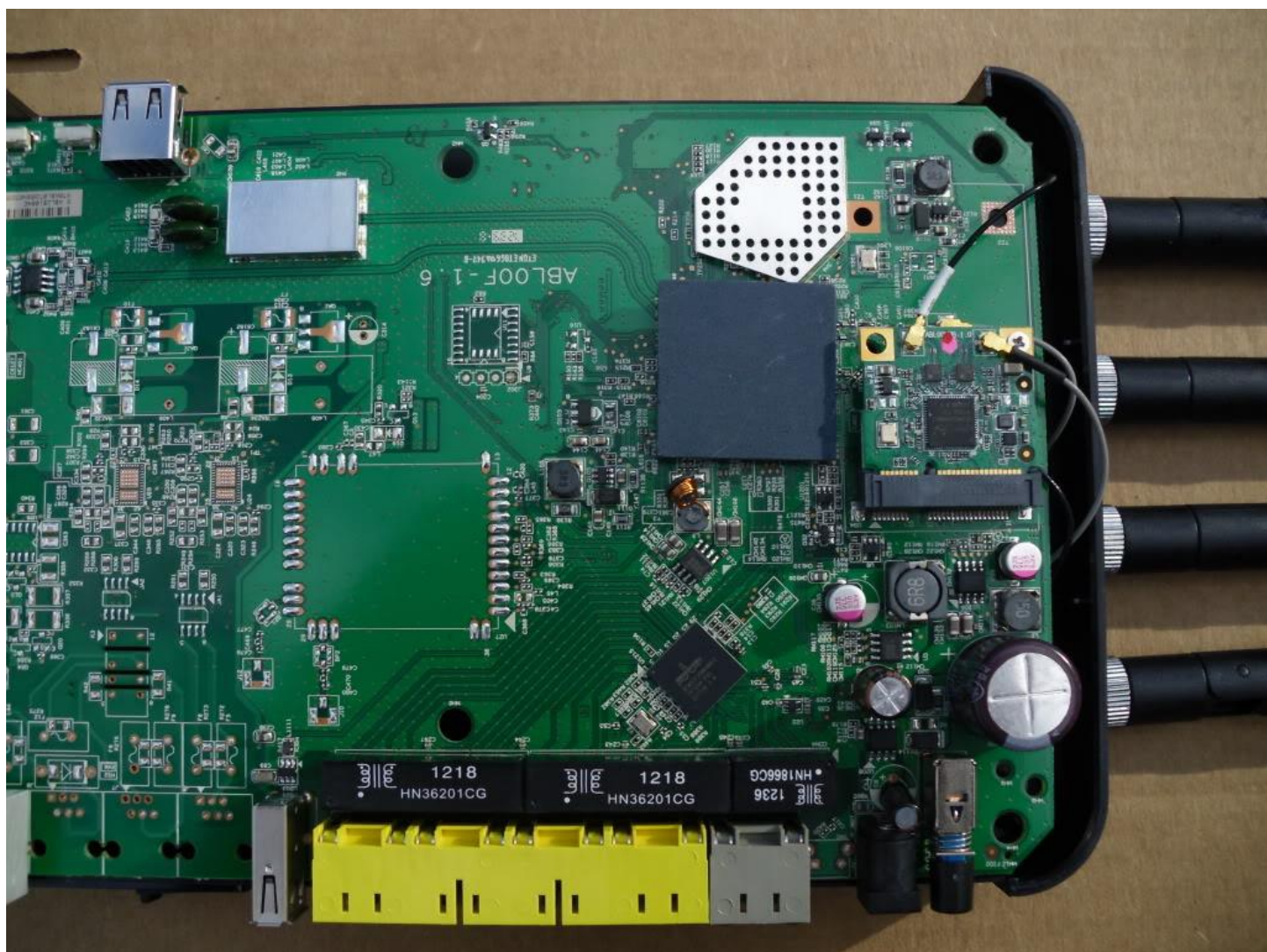
3. Remove the UFL antenna connectors. Patch antennas just come off if you want to remove completely.
4. Now this part requires some patience.
5. Fitting your new UFL connectors into the little holes can take a little practice, and patience
6. So do this first: Practice removing the original UFL antenna cables and then putting them back on.
7. Attach the U.FI cables.
8. Now you are ready to drill.
9. Detach the stock UFL cables and remove the board from the unit.
10. Mark on the unit with a pen or whatever where you want to drill.
11. Look at the image bellow on to where to mount the Antennas.



12. Drill a smaller hole first with a smaller bit and then go ahead and finish the drilling with **the 1/4" drill bit**.

13. You may want to get someone to help you hold the unit in place as you drill. Hold the unit vertically on a solid surface before drilling. Take your time. No hurry!

After the modification



14. After drilling there will be a little plastic left around the inside hole that will need removing. Just use a kitchen knife or other small knife to remove the plastic.

15. Attach the UFL cables and the RP-SMA Plugs and of course the 7dBi Antennas and you are set to go.

Be sure the nut on the RP-SMA plug is nice and tight, otherwise your antennas will flop.

When putting the case back together make sure the wires are secured in place (use clear tape for that) otherwise you can pinch them with screws!

Enjoy

WIFI Radar Scanner:

<http://www.metageek.net/products/inssider/> (free download)

The WIFI Radar Scanner will show the signal strength of your router. We recommend using it before and after installing the antennas to see the improvement of the signal strength. It can also show you which antenna position and router location can give you the best signal. The closer to -0db the better the signal, and the closer to -100db the worse.

