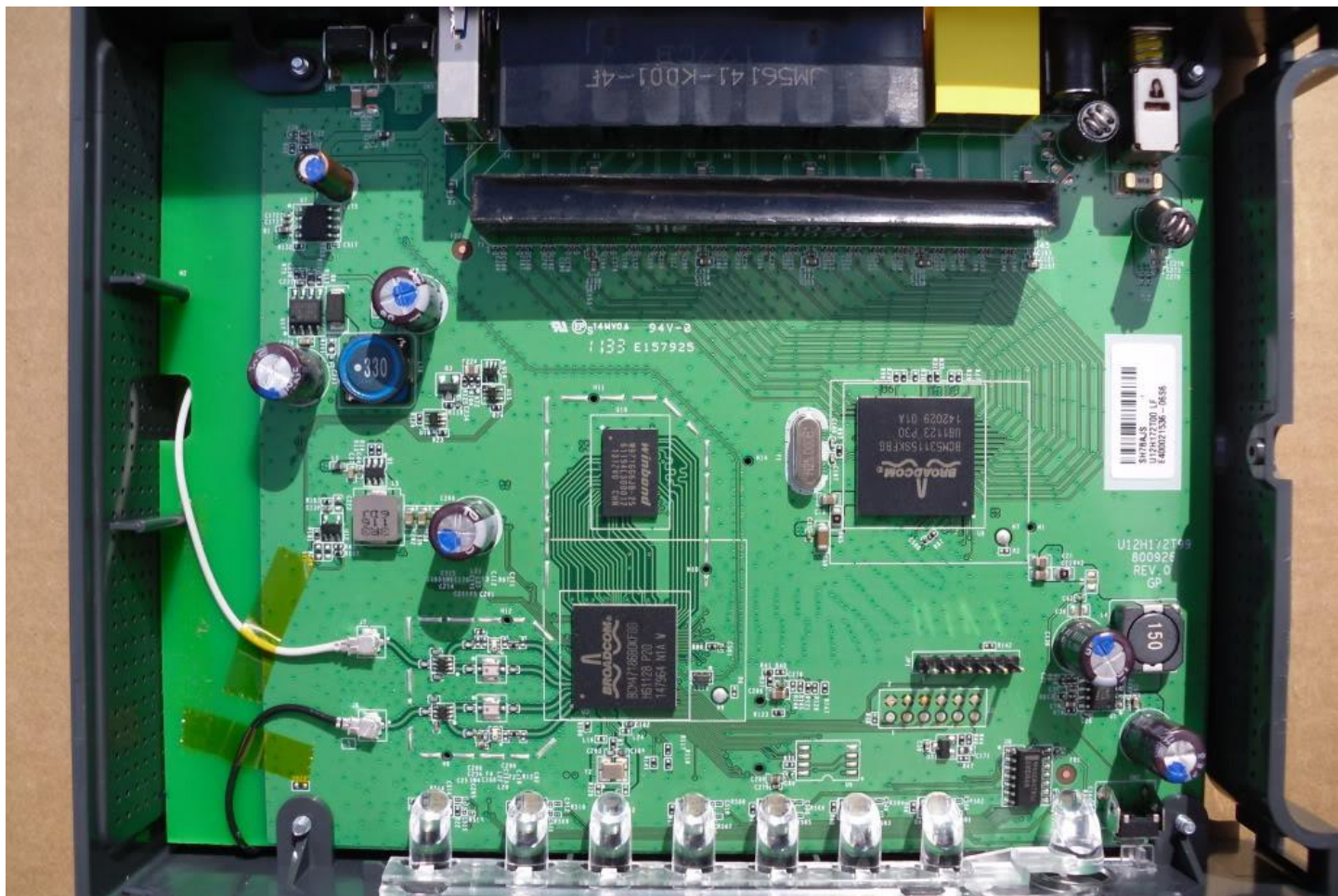


Thank you for purchasing Antenna Mod Kit for your Netgear router. You will see a tremendous improvement in both the signal strength and performance of your wireless network after you complete the steps described in this tutorial. First we will show you how to install the antennas for your router. We will provide you with a tool that will help test the performance of your newly modified Router.



Netgear WNR3500L V2 Antenna Installation Instructions:

1. No soldering required
2. Open the unit. You can use a torque wrench.



Inside of the Netgear WNR3500 v.2

Before the modification.



12. Drill a smaller hole first with a smaller bit and then go ahead and finish the drilling with **the 1/4" drill bit**.

13. You may want to get someone to help you hold the unit in place as you drill. Hold the unit vertically on a solid surface before drilling. Take your time. No hurry!

14. After drilling there will be a little plastic left around the inside hole that will need removing. Just use a kitchen knife or other small knife to remove the plastic.

15. Attach the UFL cables and the RP-SMA Plugs and of course the 7dBi Antennas and you are set to go. Be sure the nut on the RP-SMA plug is nice and tight, otherwise your antennas will flop.

When putting the case back together make sure the wires are secured in place (use electrical tape for that) otherwise you can pinch them with screws!

Enjoy

WiFi Radar Scanner:

<http://www.metageek.net/products/insider/> (free download)

The WiFi Radar Scanner will show the signal strength of your router. We recommend using it before and after installing the antennas to see the improvement of the signal strength. It can also show you which antenna position and router location can give you the best signal. The closer to -0db the better the signal, and the closer to -100db the worse.

